

SPAGNOLcucine

CUCINE SENZA TEMPO

LOUISIANA · OLD ASOLO · TABIÀ



LOUISIANA, OLD ASOLO E TABIÀ: UN PROGRAMMA COMPLETO CAPACE DI INTERPRETARE IN CHIAVE MODERNA I TRATTI STILISTICI DEL PASSATO E IL FASCINO DEI PARTICOLARI PIÙ RICERCATI. SOLUZIONI DI GRANDE CARATTERE PER CHI AMA LO STILE COUNTRY, NEW-CLASSIC E VINTAGE.

CUCINE SENZA TEMPO

LOUISIANA · OLD ASOLO · TABIÀ · LUCY · RIVA 68

LOUISIANA, OLD ASOLO, TABIÀ, LUCY E RIVA 68: UN PROGRAMMA COMPLETO CAPACE DI INTERPRETARE IN CHIAVE MODERNA I TRATTI STILISTICI DEL PASSATO E IL FASCINO DEI PARTICOLARI PIÙ RICERCATI. SOLUZIONI DI GRANDE CARATTERE PER CHI AMA LO STILE COUNTRY, NEW-CLASSIC E VINTAGE.

LOUISIANA, OLD ASOLO, TABIÀ, LUCY AND RIVA 68: A COMPLETE PROGRAM TO INTERPRET - IN A MODERN KEY - THE STYLE NUANCES OF THE PAST AND THE CHARM OF THE MOST RESEARCHED DETAILS. GREAT CHARACTER SOLUTIONS FOR THOSE WHO LOVE THE COUNTRY, NEW-CLASSIC AND VINTAGE STYLES.

LOUISIANA, OLD ASOLO, TABIÀ, LUCY ET RIVA 68: UN PROGRAMME COMPLET CAPABLE D'INTERPRÉTER DE FAÇON MODERNE LES TRAITS STYLISTIQUES DU PASSÉ ET LE CHARME DES DÉTAILS LES PLUS RECHERCHÉS. SOLUTIONS DE GRAND CARACTÈRE POUR CEUX QUI APPRÉCIENT LE STYLE COUNTRY, NÉO-CLASSIQUE ET VINTAGE.

LOUISIANA

PROGETTO 01 > 06



LOUISIANA

PROGETTO 02 > 18



LOUISIANA

PROGETTO 03 > 30



LOUISIANA

PROGETTO 04 > 42



TABIÀ

PROGETTO 05 > 56



TABIÀ

PROGETTO 06 > 70



TABIÀ

PROGETTO 07 > 82



TABIÀ

PROGETTO 08 > 92



OLD ASOLO

PROGETTO 09 > 102



OLD ASOLO

PROGETTO 10 > 114



OLD ASOLO

PROGETTO 11 > 124



OLD ASOLO

PROGETTO 12 > 134



LUCY

PROGETTO 13 > 146



LUCY

PROGETTO 14 > 158



RIVA 68

PROGETTO 15 > 168



RIVA 68

PROGETTO 16 > 180





UNO STILE URBAN-CLASSIC

Una nuova veste dove il termine "classico" si coniuga con un nuovo stile: l'urban-classic, un mix di tendenze e dettagli che rendono il prodotto più lanciato ed attuale.

A URBAN-CLASSIC STYLE

A new guise, where the word "classic" conjugates with a new style, urban-classic: a mix of trends and details that make the product more reaching and state-of-the-art.

UN STILE URBAN-CLASSIC

Un nouvelle approche où le terme "classique" est associé à un nouveau style: l'urban-classic, un mélange de tendances et de détails qui rendent le produit plus tendance et actuel.

LOUISIANA



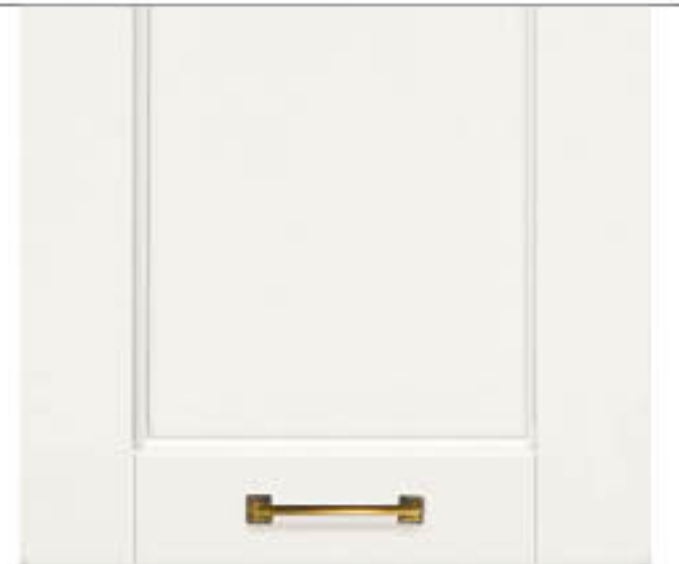
LOUISIANA



TABIÀ



OLD ASOLO



LUCY



RIVA 68



CLASSIC-CHIC

IT ANTA BASE/COLONNINE/PENSILI LACCATO OPACO MANOPESCA BIANCO. PIANO BANCONE FENIX BIANCO ALASKA. ZOCCOLO LACCATO OPACO MANOPESCA BIANCO. TOP FENIX BIANCO ALASKA.

Eligio della forma e lavorazioni di pregio: questa è Louisiana. Qui il gusto e lo stile si esprimono al loro livello più alto. Le curve e i profili curati in ogni dettaglio, incontrano la luce del laccato opaco manopesca bianco. Ne risulta una cucina attuale, fresca ed elegante, capace di soddisfare il desiderio di solidità e sicurezza.

ENG: BASE DOOR/TALL UNITS/WALL UNITS MAT WHITE LACQUERED PEACH SKIN. COUNTER SURFACE FENIX ALASKA WHITE. PUNTH MAT WHITE LACQUERED PEACH SKIN. TOP FENIX ALASKA WHITE.

Praise of shape and precious processing: this is Louisiana. Here, taste and style are expressed at their highest level. The care in every detail of the curves and profiles meets the light of the mat white lacquered peach skin. The result is a state-of-the-art, fresh elegant kitchen, that can fulfill the wish of solidity and safety.

FR: PORTE BASE/COLONNINES/MELBIES SUSPENDIUS LAQUÉ MAT PEAU DE PÊCHE BLANC. PLAN DU COMPTOIR FENIX BLANC ALASKA. PUNTHE LAQUÉ MAT PEAU DE PÊCHE BLANC. TOP FENIX BLANC ALASKA.

Éloge de la forme et travail de qualité: voici ce qu'est Louisiana. Ici le goût et le style s'expriment à leur paroxysme. Les courbes et les profils soignés dans les moindres détails rencontrent la lumière du laqué mat peau de pêche blanc. Le résultat est une cuisine actuelle, fraîche et élégante, capable de satisfaire le désir de solidité et de sécurité.

PROGETTO 01
LACCATO OPACO MANOPESCA







.....
LE FORME VENGONO AGGRAZITE
DALLE LINEE CURVE DEI DETAGLI:
QUESTA È IL NUOVO CONCEPT DI
LOUISIANA.

.....
THE SHAPES ARE MADE MORE
GRACEFUL BY THE CURVED
LINES OF THE DETAILS: THIS IS
LOUISIANA'S NEW CONCEPT.

.....
LES FORMES SONT RENDUES
GRACIEUSES PAR LES LIGNES
COURBÉES DES DÉTAILS:
VOICI LE NOUVEAU CONCEPT
DE LOUISIANA.



.....
LA MANIGLIA PHARMA

LA MANIGLIA È L'OGGETTO CHE
COMPIETA LA VESTE DI UNA CUCINA.
LA SELEZIONE DI QUESTA MANIGLIA
GARANTISCE DEI REQUISITI DI ALTO
LIVELLO.

.....
THE PHARMA HANDLE

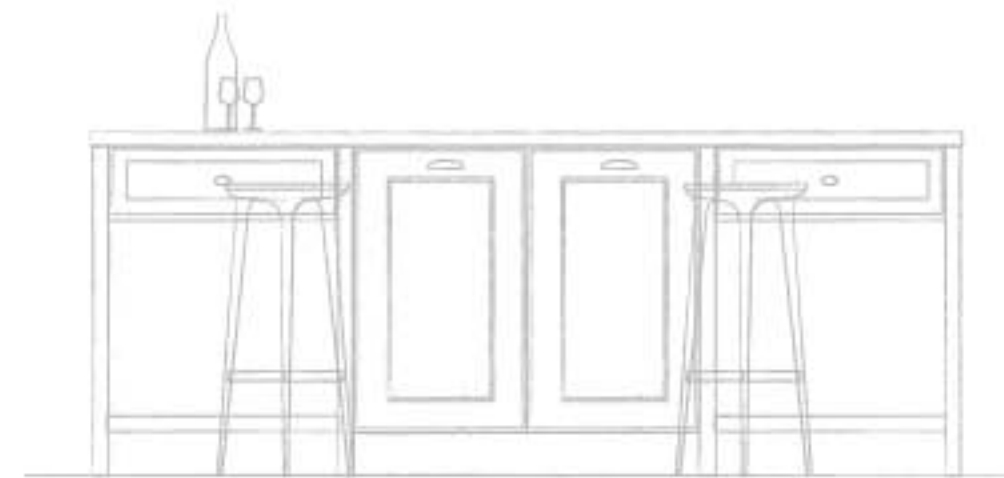
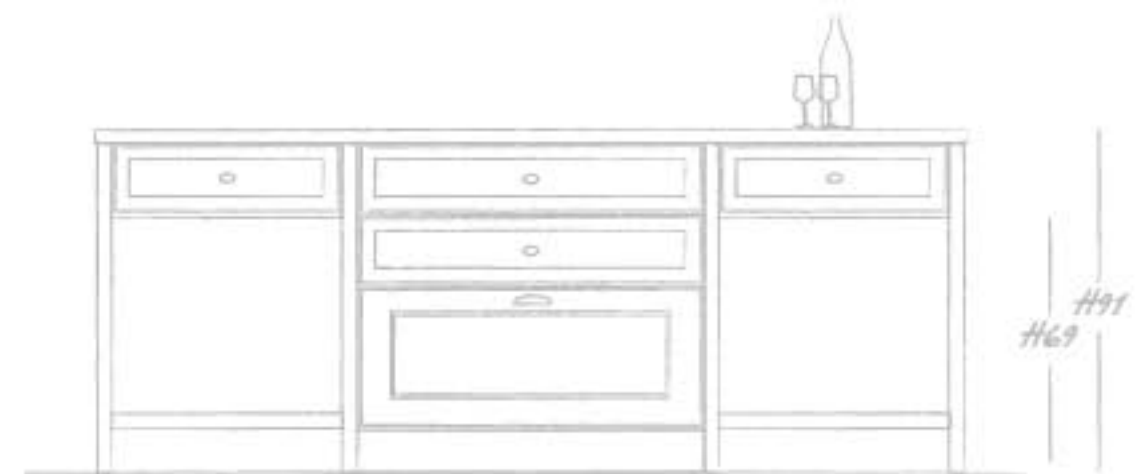
THE HANDLE IS THE OBJECT THAT
COMPLETES THE GUISE OF A KITCHEN.
THE SELECTION OF SUCH HANDLE
ENSURES HIGH-LEVEL PERFORMANCES.

.....
LA POIGNÉE PHARMA

LA POIGNÉE EST L'OBJET QUI COMPLÈTE
L'HABIT D'UNE CUISINE. LA SÉLECTION
DE CETTE POIGNÉE GARANTIT UNE
HAUTE QUALITÉ.



PROGETTO 01
LACCATO OPACO MANOPESCA



234

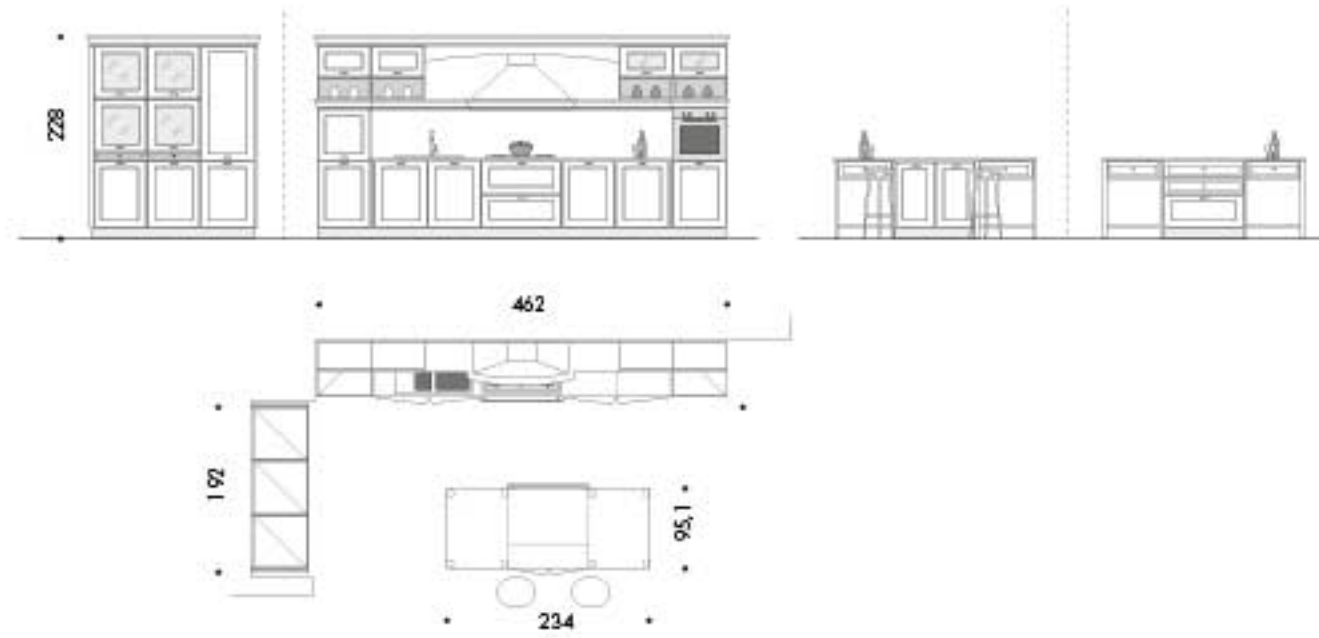
ISOLA CENTRALE

.....
 GLI ELEMENTI A GIORNO
 CREANO QUELLA SENSAZIONE
 DI RESPIRO ANCHE IN AMBIENTI
 TROPPO ANGUSTI.

.....
 THE OPEN AIR ELEMENTS CREATE
 A BREATHING FEELING EVEN IN
 TOO NARROW ENVIRONMENT.

.....
 LES ÉLÉMENTS OUVERTS CRÉENT
 CETTE SENSATION DE RÉPIT MÊME
 DANS DES PIÈCES TROP ÉTROITES.

PROGETTO
PLAN
PROJECT



FINITURE FRONTALI
FRONT FINISHES
FAÇADES FINITION



MANIGLIA
HANDLE
POIGNEE



STRUTTURA
STRUCTURE
STRUCTURE



PIANO
TOP
PLAN DE TRAVAIL



PIANO BANCONE
COUNTERTOP
SURFACE DU DE
TABLE



URBAN MOOD

IT ANTA BASE/COLONNINE/PENSILI LACCATO OPACO MANOPESCA GRIGIO LONDRA, METROPOLITA ACCIAIO BUGNATO. ZOCCOLO LACCATO OPACO MANOPESCA GRIGIO LONDRA. TOP DEKTON KELLIA.

Stile industriale e atmosfere vintage. Louisiana si ispira ad un mood urbano ricco di contaminazioni. Il connubio tra acciaio bugnato, vetro e legno laccato Grigio Londra crea un ambiente vissuto, caldo e autentico. Spaziosa e eccitante, Louisiana è dedicata a chi ama l'ampio respiro del loft e non rinuncia allo stile più attuale.

ENG BASE DOOR/TALL UNITS/WALL UNITS MAT LONDON GRAY PEACH SKIN LACQUERED, METROPOLITA IN ASHLAR STEEL. FINISH MAT LONDON GRAY PEACH SKIN LACQUERED. TOP DEKTON KELLIA.

Industrial style and vintage atmospheres. Louisiana inspires to an urban mood, rich in contaminations. The combination of ashlar steel, glass and London Gray lacquered wood creates a lively, warm authentic environment. Spacious and intriguing, Louisiana is dedicated to those who love the wide breath of the loft without giving up the most modern style.

FR PORTE BASE/COLONNES/MEUBLES SUSPENDUS LAQUÉ MAT PÊCHE GRIS LONDRES, METROPOLITA ACIER BOSSÉ. FINITHE LAQUÉ MAT PÊCHE GRIS LONDRES. TOP DEKTON KELLIA.

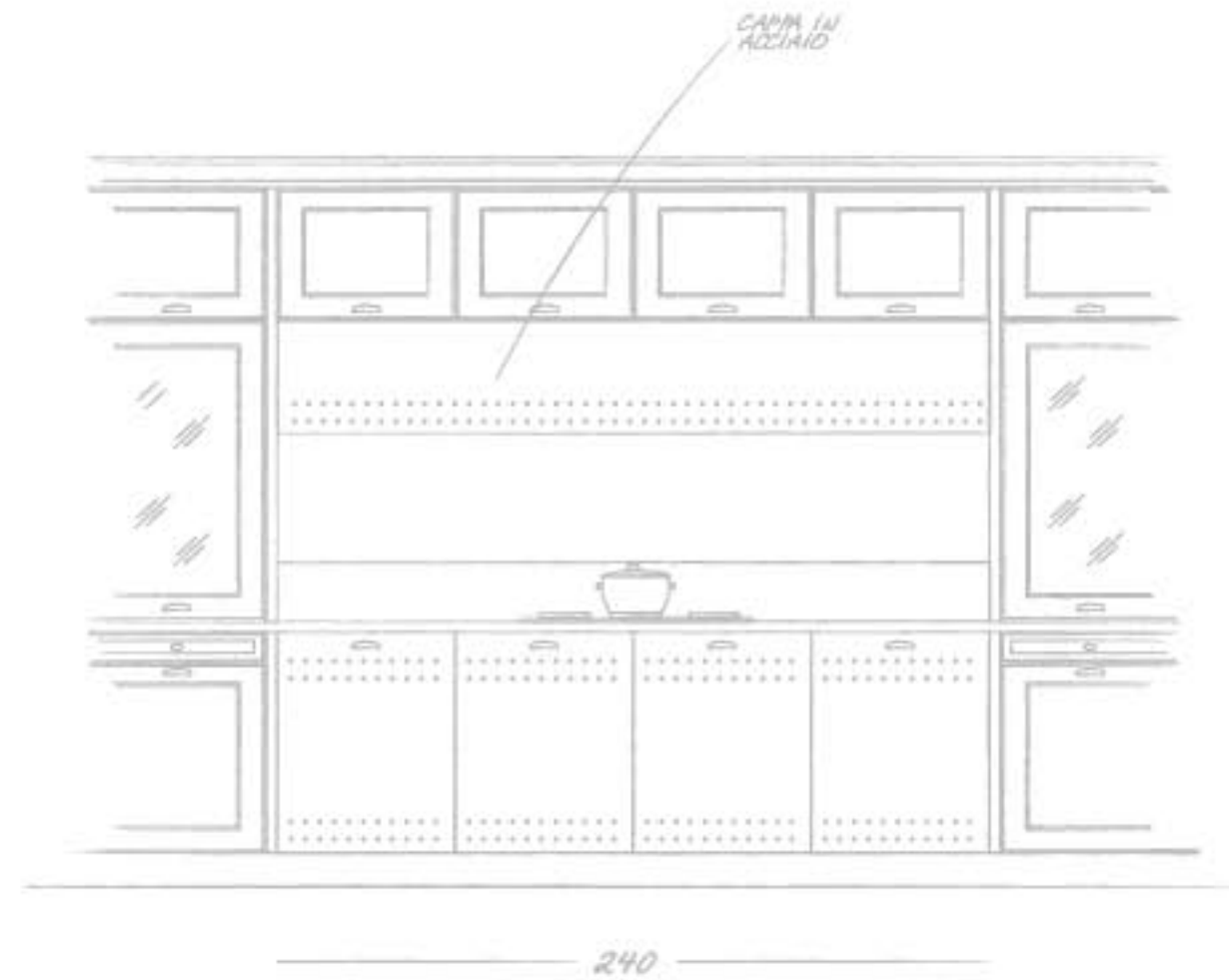
Stile industriel et atmosphères vintage. Louisiana s'inspire d'un mood urbain riche en influences. Le mariage entre acier bossé, verre et bois laqué Gris Londres crée une ambiance subjective, chaleureuse et authentique. Spacieuse et séduisante, Louisiana est pour ceux qui apprécient les grands espaces du loft et ne renoncent pas aux dernières tendances.

PROGETTO 02
LACCATO OPACO MANOPESCA /
ACCIAIO BUGNATO









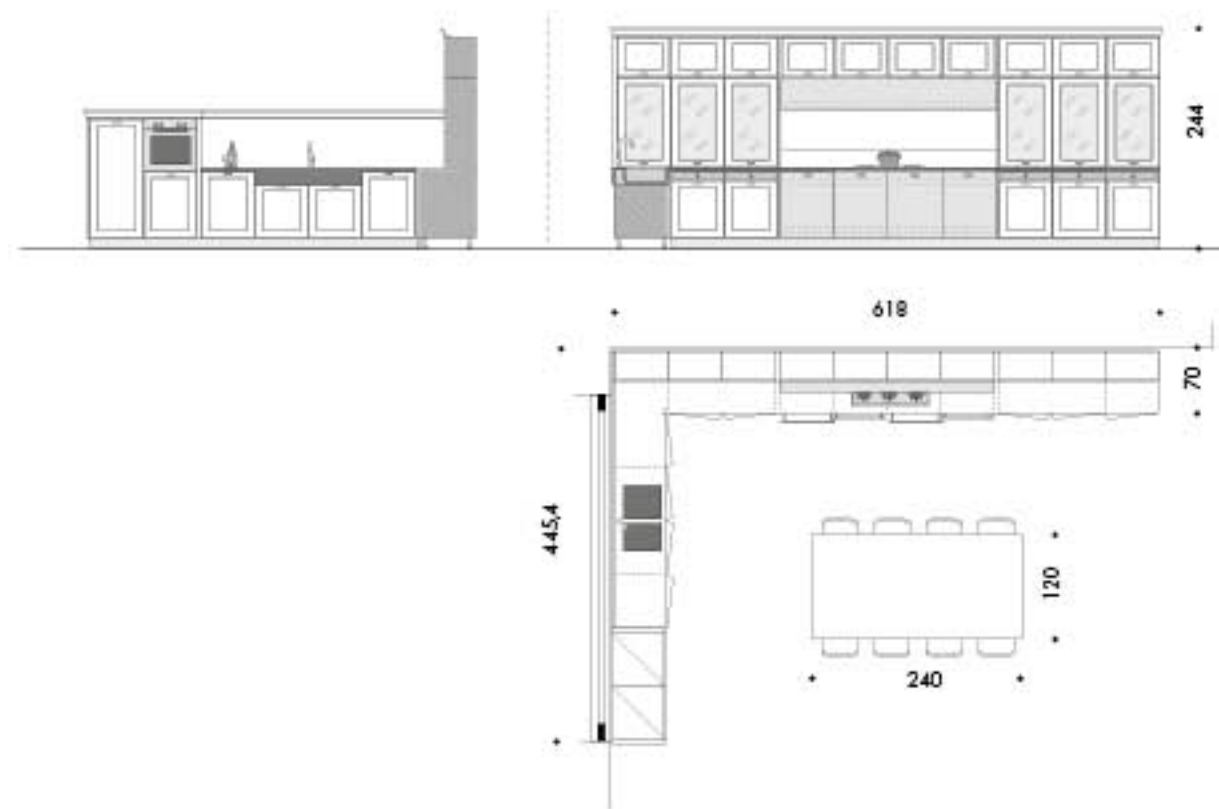
.....
 METROPOLITA È UN'ANTA DEDICATA AL NUOVO STILE DI LOUISIANA, DI BASE IN METALLO, PRESTA ATTENZIONE ALLA SUA FINITURA VERNICIATA.

.....
 METROPOLITA IS A DOOR DEDICATED TO LOUISIANA'S NEW STYLE: BASED ON METAL, IT PAYS ATTENTION TO ITS PAINTED FINISHING.

.....
 METROPOLITA EST UNE PORTE DÉDIÉE AU NOUVEAU STYLE DE LOUISIANA, AVEC UNE BASE EN MÉTAL, PRENEZ LE SOIN D'OBSERVER SA FINITION PEINTE.



PROGETTO
PLAN
PROJECT



FINITURE FRONTALI
FRONT FINISHES
FAÇADES FINITION



Grigio Londra
LACCATO OPACO
MANOPESCA



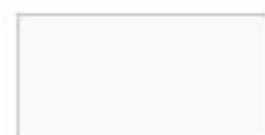
ACCIAIO BUGNATO

MANIGLIA
HANDLE
POIGNEE



Antique Grey
PHARMA / BANISTER

STRUTTURA
STRUCTURE
STRUCTURE



BIANCO

PIANO
TOP
PLAN DE TRAVAIL



DKTON



NEOCLASSICISM

IT ANTA BASE/COLONNIE/PENSILI LACCATO OPACO MANOPESCA OTTAWA, METROPOLITA ACCIAIO BUGNATO. PIANO BANCONIE FENIX OTTAWA. ZOCCOLO LACCATO OPACO MANOPESCA OTTAWA. TOP FENIX OTTAWA.

Il vero protagonista è il fascino intramontabile delle forme neoclassiche, espressione di pregio decorativo e amore per la tradizione. Classico e nuovo concetto del vivere si coniugano alla perfezione. Anta quadra, decori e colonne con capitelli sono forme che attingono alla tradizione dell'alta falegnameria. L'approccio progettuale guarda alle esigenze più pratiche del vivere quotidiano.

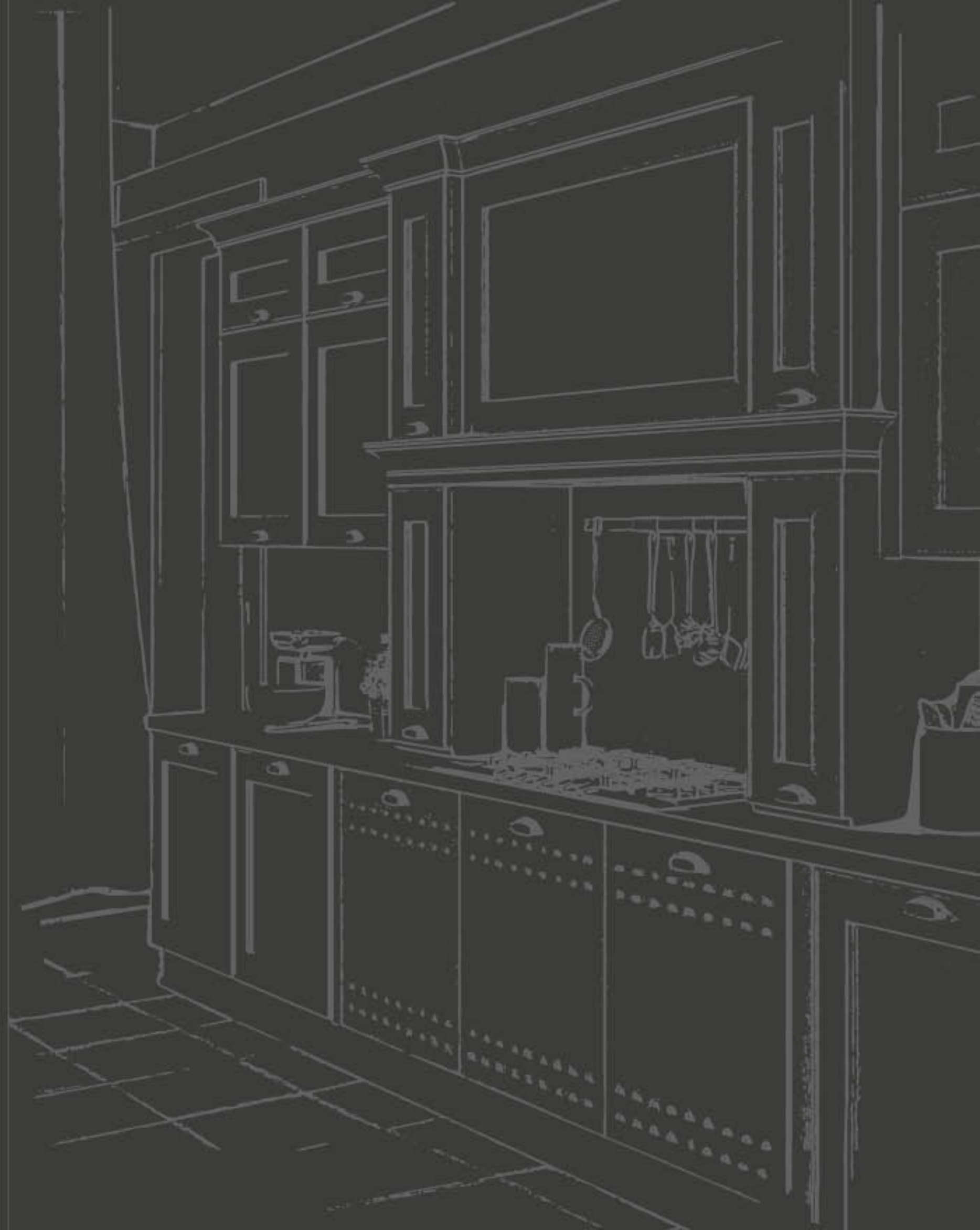
ENG. BASE DOOR/TALL UNITS/WALL UNITS MAT OTTAWA PEACH SKIN LACQUERED, METROPOLITA IN ASHLAR STEEL. COUNTER SURFACE FENIX OTTAWA. BUNTH MAT OTTAWA PEACH SKIN LACQUERED. TOP FENIX OTTAWA.

The true protagonist is the everlasting charm of the neoclassic shapes, an expression of decorative distinction and love for the tradition. The classic and new concept of living conjugate to perfection. Square doors, decors and tall units with capitals are shapes that draw from the tradition of high-level carpentry. The design approach looks at the most practical requirements of everyday life.

FR. PORTE BASE/COLONNES/MEUBLES SUSPENDUS LAQUÉ MAT PEAU DE PÊCHE OTTAWA, METROPOLITA ACIER BOSSÉ. PLAN COMPTOIR FENIX OTTAWA. PUNTHE LAQUÉ MAT PEAU DE PÊCHE OTTAWA. TOP FENIX OTTAWA.

Le véritable protagoniste est le charme intemporel du style néo-classique, l'expression de la qualité décorative et de l'amour de la tradition. Le style classique et l'agencement relax se marient à la perfection. Des portes carrées, des décorations et des colonnes avec chapiteaux sont des formes typiques de la haute menuiserie. L'approche conceptuelle tient compte des besoins au quotidien du point de vue pratique.

PROGETTO 03
LACCATO OPACO MANOPESCA /
ACCIAIO BUGNATO





.....
L'INSERIMENTO DI NUOVI
ARTICOLI VEDE NELL'ELEMENTO
CAPPA L'INTERPRETAZIONE DI UNO
STILE NEOCLASSICO ELEGANTE.
.....

THE INTRODUCTION OF NEW
ELEMENTS SEES IN THE HOOD-
ELEMENT THE INTERPRETATION OF
AN ELEGANT NEOCLASSIC STYLE.
.....

L'INSERTION DE NOUVEAUX
ARTICLES VOIT DANS L'ELEMENT
HOTTE L'INTERPRETATION D'UN
STYLE NEOCLASSIQUE ELEGANT.
.....





.....
L'ELEMENTO A GIORNO OFFRE DI
SERIE IL CASSETTO ESTRAIBILE.
.....

THE OPEN AIR ELEMENT OFFERS
THE EXTRACTABLE DRAWER AS A
STANDARD.
.....

.....
LA NICHE SE CARACTÉRISE PAR
UN TIROR AMOVIBLE DE SÉRIE.
.....





.....
LA ZONA COTTURA

GRAZIE ALLA DISLOCAZIONE DI ELEMENTI PARTICOLARI LA ZONA COTTURA DIVENTA UNO SPAZIO MOLTO ILLUMINATO E VERSATILE.

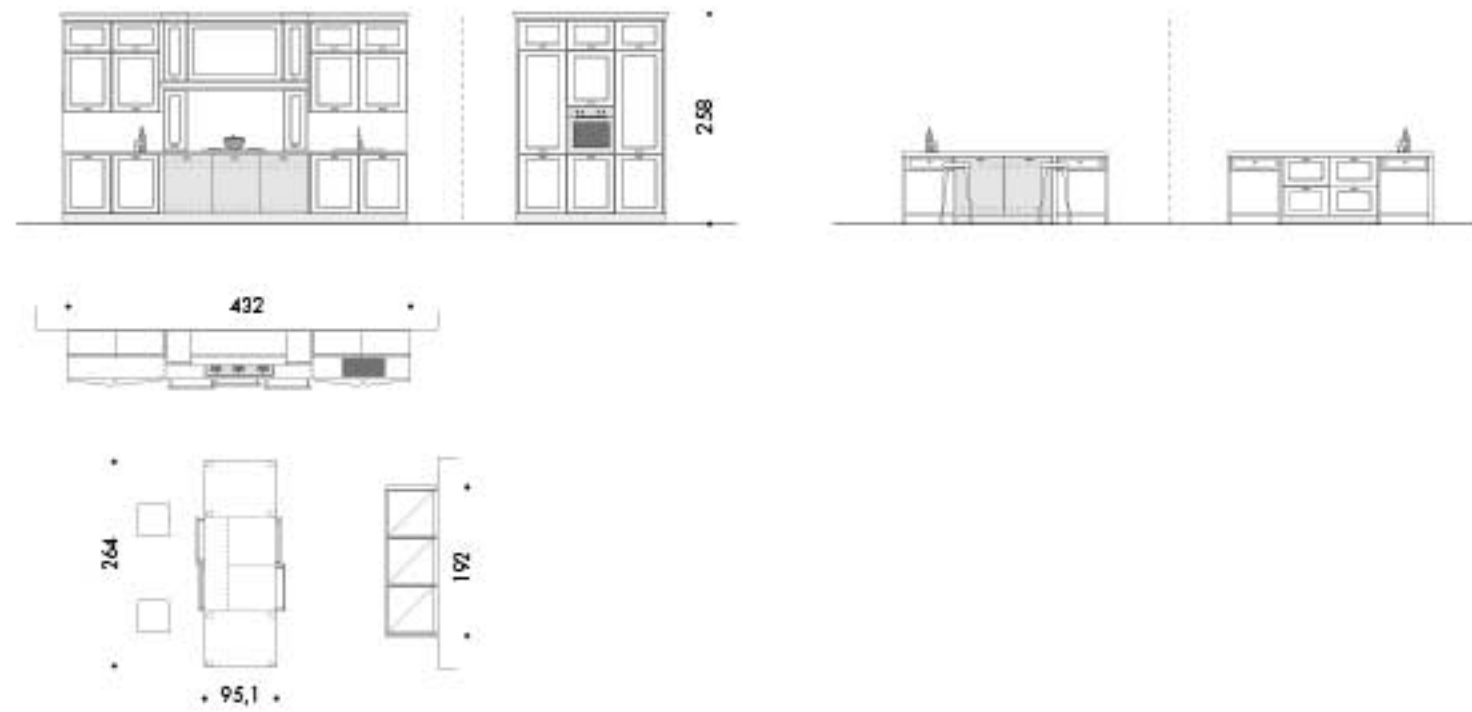
.....
THE COOKING AREA

THANKS TO THE ARRANGEMENT OF SPECIAL ELEMENTS, THE COOKING AREA BECOMES A VERY ILLUMINOUS VERSATILE SPACE.

.....
LE COIN CUISSON

GRÂCE À LA DISLOCACTION D'ÉLÉMENTS PARTICULIERS, LE COIN CUISSON DEVIENT UN ESPACE TRÈS ÉCLAIRÉ ET POLYVALENT.

PROGETTO
PLAN
PROJECT



FINITURE FRONTALI
FRONT FINISHES
FAÇADES FINITION



MANIGLIA
HANDLE
POIGNEE



STRUTTURA
STRUCTURE
STRUCTURE



PIANO
TOP
PLAN DE TRAVAIL



PIANO BANCONE
COUNTERTOP
SURFACE DU DE
TABLE



PAST CHARMS

IT ANTA BASE/COLONNINE/PENSILI LACCATO OPACO MANOPESCA NEVE, METROPOLITA ACCIAIO BUGNATO, PIANO BANCONE HPL CEMENT, ZOCOLO LACCATO OPACO MANOPESCA NEVE, TOP HPL CEMENT.

Fascino del passato e appeal contemporaneo. La cucina Louisiana è un luogo accogliente da condividere e amare; una cucina vivace per gustare ogni istante della giornata. Anta in legno laccato opaco manesca e in acciaio bugnato, elementi che rappresentano il valore di un prodotto fatto per durare.

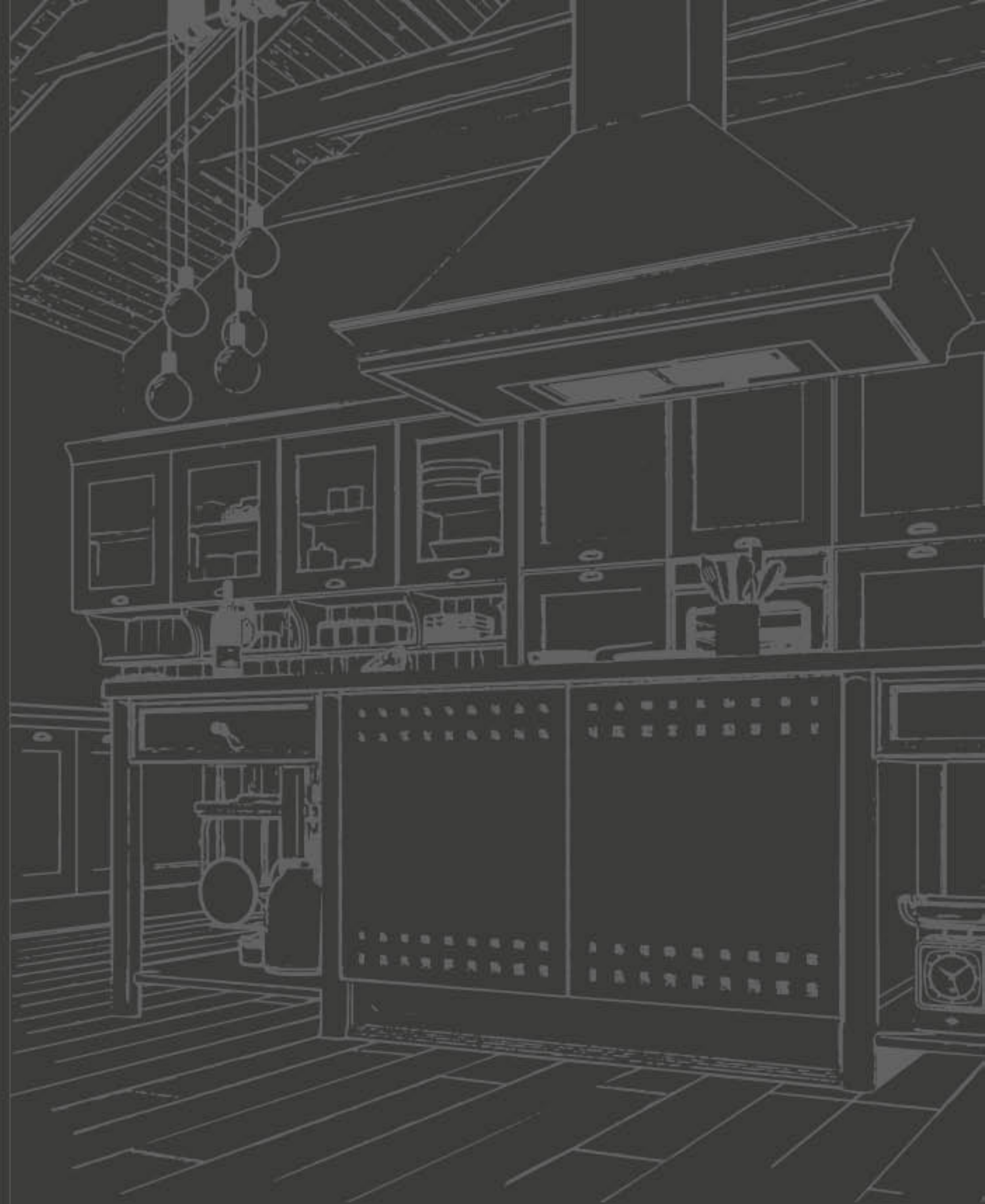
ENG BASE DOOR/TALL UNITS/WALL UNITS MAT SNOW PEACH SKIN LACQUERED, METROPOLITA IN ASHLAR STEEL, COUNTER SURFACE HPL CEMENT, PUNTH MAT SNOW PEACH SKIN LACQUERED, TOP HPL CEMENT.

Charm of the past and contemporary appeal. The Louisiana kitchen is a welcoming space, to be shared and loved; a lively kitchen to savor at any time of the day. Doors in mat peach skin lacquered wood and ashlar steel: elements that represent the value of a product made to last.

FR PORTE BASE/COLONNINES/MEUBLES SUSPENDUS LAQUÉ MAT PEAU DE PÊCHE NEIGE, METROPOLITA ACIER BOSSÉ, PLAN DU COMPTOIR HPL CEMENT, PLINTHE LAQUÉ MAT PEAU DE PÊCHE NEIGE, TOP HPL CEMENT.

Charme du passé et attrait moderne. La cuisine Louisiana est un lieu convivial pour partager et aimer; une cuisine pleine de couleurs pour savourer chaque instant de la journée. Des portes en bois laqué agraphé et en acier bossé, des éléments qui en représentent la valeur d'un produit fait pour durer.

PROGETTO 04
LACCATO OPACO MANOPESCA /
ACCIAIO BUGNATO





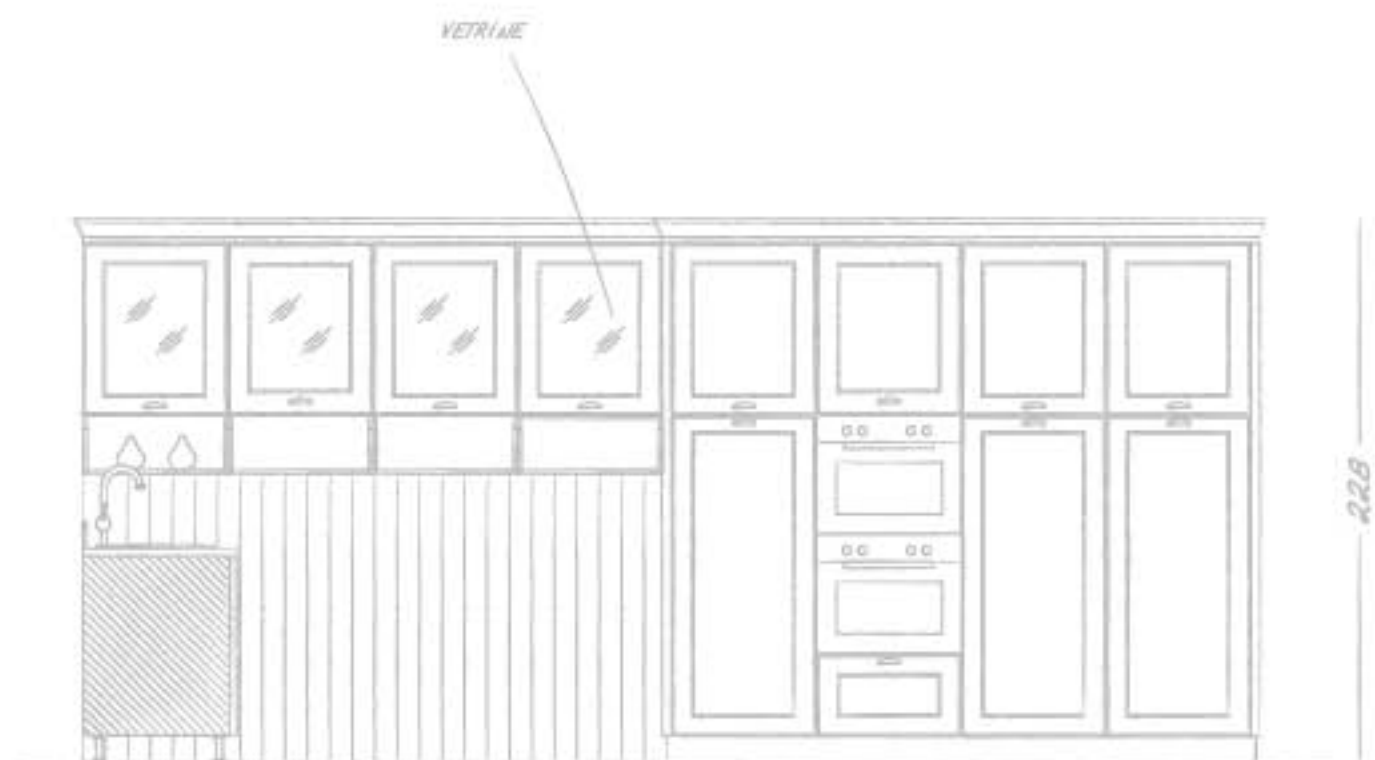
.....
NUOVE CAPPE D'ARREDO
ACCOMPAGNANO QUESTA
NUOVA VALUTAZIONE DEL
CLASSICO.

.....
NEW HOODS ACCOMPANY THIS
NEW PROPOSAL OF CLASSIC.

.....
DE NOUVELLES HOTTES
D'AMEUBLEMENT
ACCOMPAGNENT CETTE
NOUVELLE APPROCHE DU
CLASSIQUE.





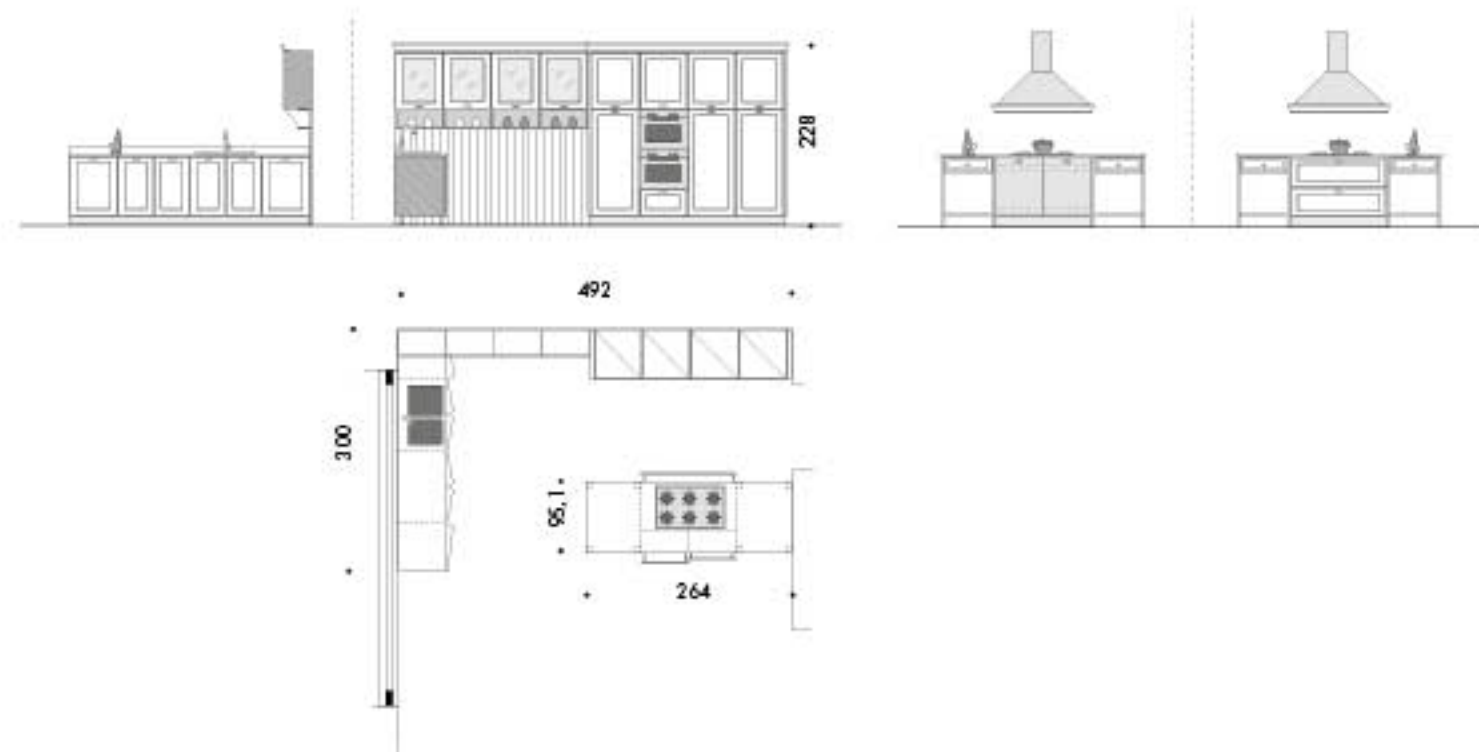


*PENSILI E
VANI A GIORNO
SOSPESI*





PROGETTO
PLAN
PROJECT



FINITURE FRONTALI
FRONT FINISHES
FAÇADES FINITION



LACCATO OPACO
MANOPESCA



ACCIAIO BUGNATO

MANIGLIA
HANDLE
POIGNEE



PHARMA / BANISTER

FINITURE STRUTTURA
FRAME FINISHES
FINITION DE LA STRUCTURE



COLONIALE

PIANO
TOP
PLAN DE TRAVAIL



HPL STRATIFICATO

PIANO BANCONE
COUNTERTOP
SURFACE DU DE
TABLE



HPL STRATIFICATO

VINTAGE APPEAL

IT ANTA BASE/COLONNINE/PENSILI LACCATO OPACO MANOPESCA GRIGIO LONDRA, FRASSINO NATURALE. PIANO BANCONE HPL TRAVERTINO. ZOCCOLO LACCATO OPACO MANOPESCA GRIGIO LONDRA, FRASSINO NATURALE. TOP HPL TRAVERTINO.

Decisa ed attuale: Tabià sorprende con una laccata idealmente metropolitana. Ante quadrate dogate, scaffalature in metallo laccato, elementi in lavagna: sono segni di un passato recente che riaffiora qui, in un perfetto mix tra stile classico e industrial chic.

ENG BASE DOOR/TALL UNITS/WALL UNITS MAT LONDON GRAY PEACH SKIN LACQUERED, NATURAL ASH. COUNTER SURFACE HPL TRAVERTINO. BUNTH MAT LONDON GRAY PEACH SKIN LACQUERED, NATURAL ASH. TOP HPL TRAVERTINO.

Determined and state-of-the-art: Tabià is surprising by its ideally metropolitan touch. Square stove doors, lacquered metal racks, board elements: the signs of a recent past that reappears here, in a perfect mix of classic and industrial chic style.

FR PORTE BASE/COLONNINES/MEUBLES SUSPENDUS LAQUÉ MAT PEAU DE PÊCHE GRIS LONDRES, FRÊNE NATUREL. PLAN DU COMPTOIR HPL TRAVERTINO. PLINTHE LAQUÉ MAT PEAU DE PÊCHE GRIS LONDRES, FRÊNE NATUREL. TOP HPL TRAVERTINO.

Des lignes nettes et actuelles: Tabià surprend avec une touche idéalement métropolitaine. Des portes carrées à lattes, des étagères en métal laqué, des éléments en ardoise: ce sont des traces d'un passé récent qui refait surface ici, dans un mélange parfait entre style classique et industrial chic.

PROGETTO 05
LACCATO OPACO MANOPESCA /
FRASSINO NATURALE







.....
L'ESSENZA DEL LEGNO NATURALE,
CHIARO COME IL FRASSINO CHE
GLI ACCOSTA BENE IL COLORE
SCURO GRIGIO LONDRA.

.....
THE ESSENCE OF NATURAL
WOOD, AS CLEAR AS ASH TREE,
IS HERE WELL MATED TO THE
LONDON GRAY DARK COLOR.

.....
L'ESSENCE DU BOIS NATUREL,
CLAIR COMME LE FRÊNE QUI SE
RAPPROCHE BIEN DE LA COULEUR
FONCÉE GRIS LONDRES.



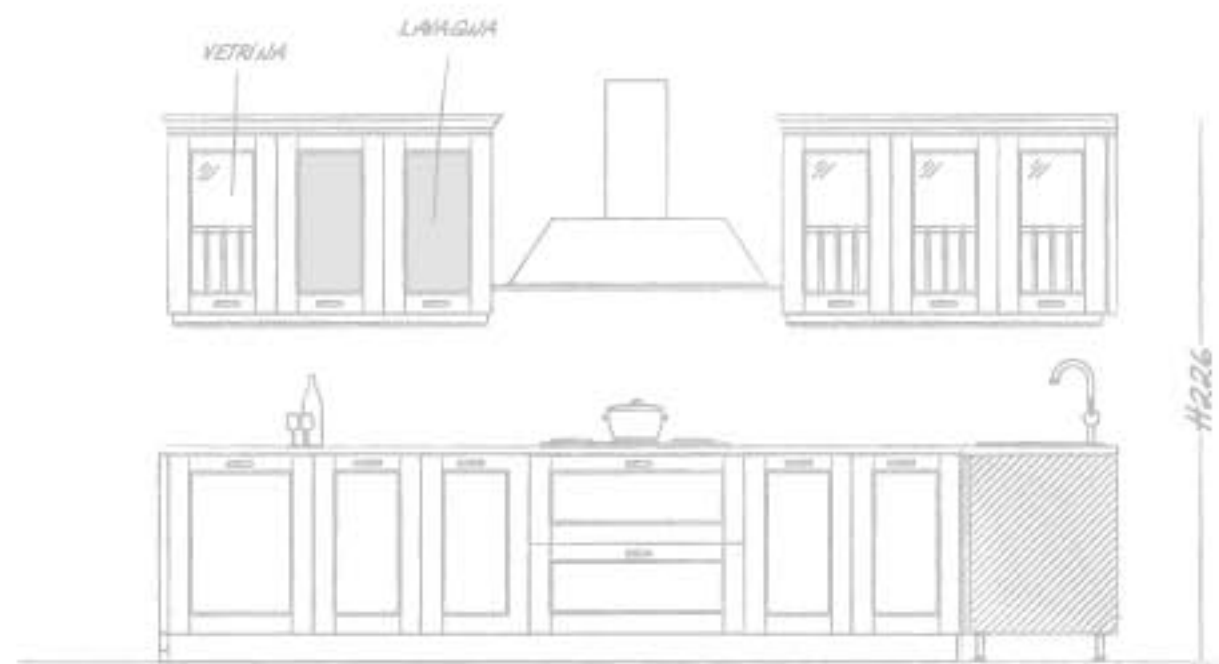


.....
CREARE DEGLI SPAZI ALTERNATIVI
CHE RIMANGANO SEMPRE
A DISPOSIZIONE DEI PROPRI
MOVIMENTI.
.....

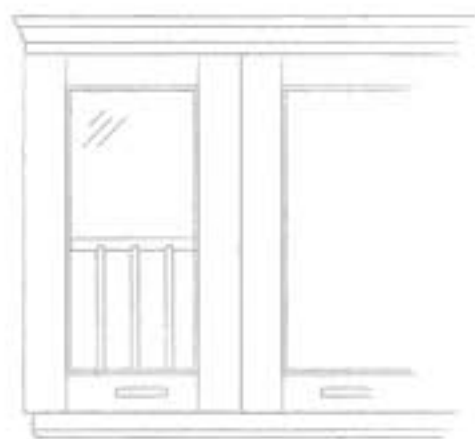
.....
CREATING ALTERNATIVE SPACES
THAT ALWAYS REMAIN AVAILABLE
TO YOUR OWN MOVEMENTS.
.....

.....
CRÉER DES ESPACES ALTERNATIFS
QUI SONT TOUJOURS À
DISPOSITION DE LEURS PROPRES
MOUVEMENTS.
.....

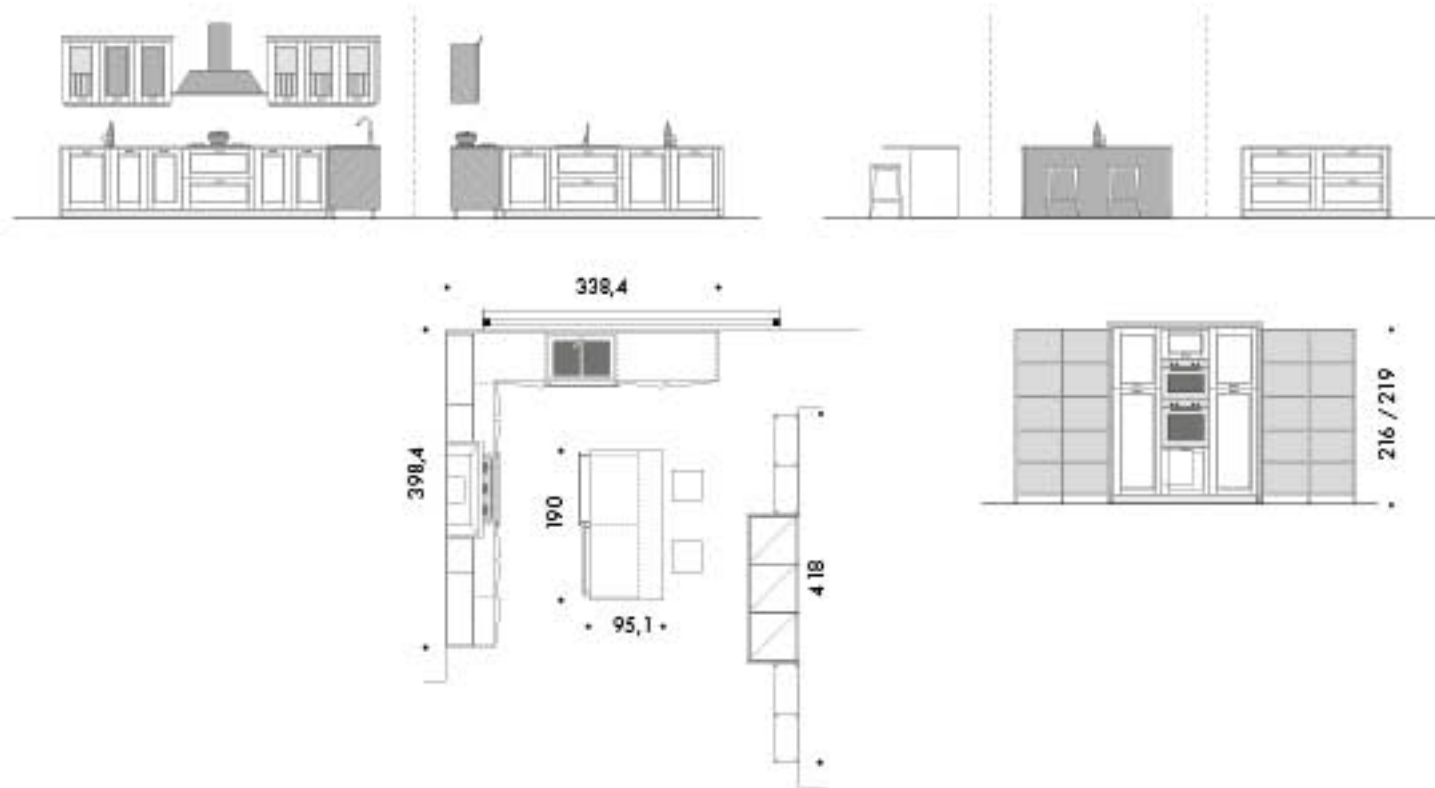




ANTE VETRIANA
E ANTE CON
LAVAGIA



PROGETTO
PLAN
PROJECT



FINITURE FRONTALI
FRONT FINISHES
FAÇADES FINITION

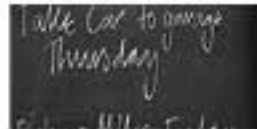
Grigio Londra



LACCATO OPACO
MANOPESCA



FRASSINO NATURALE



LAVAGNA

MANIGLIA
HANDLE
POIGNEE

Antique Brown



LOCKER

STRUTTURA
STRUCTURE
STRUCTURE



COLONIALE

ELEMENTI A GIORNO
OPEN ELEMENTS
ÉLÉMENTS OUVERTS



laccato

PIANO
TOP
PLAN DE TRAVAIL



HPL STRATIFICATO

PIANO BANCONE
COUNTERTOP
SURFACE DU DE
TABLE



HPL STRATIFICATO



SIMPLY ELEGANT

IT ANTA BASE/COLONNINE/PENSILI LACCATO OPACO MANOPESCA BIANCO NEVE. ZOCCOLO LACCATO OPACO MANOPESCA BIANCO NEVE. TOP PIETRA COMPOSITA GREY SAND.

Linea classica e linee decise per una cucina che ha fatto dell'eleganza uno dei suoi punti di forza. L'anta con lavagna e la particolare lavorazione delle vetrine, conferiscono uno stile accattivante alla semplicità della disposizione lineare.

ENG BASE DOOR/TALL UNITS/WALL UNITS MAT SNOW PEACH SKIN LACQUERED. PLINTH MAT SNOW PEACH SKIN LACQUERED. TOP PIETRA COMPOSITA GREY SAND.

Classic shade and determined lines for a kitchen that has made of elegance one of its strong points. The door with the board and the special process of the windows confer an intriguing style to the simplicity of the linear arrangement.

FR PORTE BASE/COLONNINES/MEUBLES SUSPENDUS LAQUÉ MAT PEAU DE PÊCHE NEIGE. PLINTHE LAQUÉ MAT PEAU DE PÊCHE NEIGE. TOP PIETRA COMPOSITA GREY SAND.

Un coloris classique et des lignes nettes pour une cuisine qui a fait de l'élégance un de ses points forts. La porte avec ardoise et le traitement spécial des vitrines donnent un style attrayant à la simplicité de l'agencement linéaire.

PROGETTO 06
LACCATO OPACO MANOPESCA





Yogurt
Eggs
Coffee
Honey
Lemon
Lettuce
Carrots
Apples
Onions
Cilantro



Milk
Yogurt
Eggs
Coffee
Honey
Cumin
Lettuce
Carrots
Apples
Oranges
Onions
Cilantro

1000
1000
1000





PROGETTO 06
LACCATO OPACO MANOPESCA



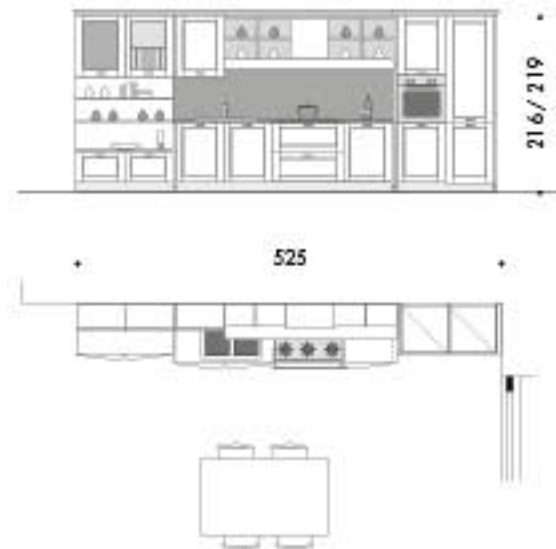


.....
L'ELEMENTO LAVAGNA È L'IDEALE
PER POTER FISSARE I PROPRI
IMPEGNI E NON DIMENTICARLI.

.....
THE BOARD ELEMENT IS IDEAL TO
ATTACH YOUR COMMITMENTS
AND NOT FORGET THEM.

.....
L'ÉLÉMENT EN ARDOISE EST
L'IDÉAL POUR POUVOIR FIXER SES
IMPÉRATIFS ET NE PAS LES OUBLIER.

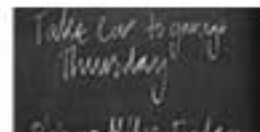
PROGETTO
PLAN
PROJECT



FINITURE FRONTALI
FRONT FINISHES
FAÇADES FINITION



LACCATO OPACO
MANOPESCA



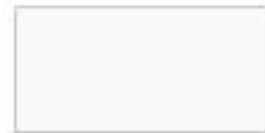
LAVAGNA

MANIGLIA
HANDLE
POIGNEE



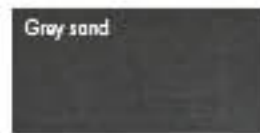
LOCKER

STRUTTURA
STRUCTURE
STRUCTURE



BIANCO

PIANO
TOP
PLAN DE TRAVAIL



PIETRA COMPOSTA



POST INDUSTRIAL

IT ANTA BASE/COLONNINE/PENSILI LACCATO OPACO MANOPESCA GRIGIO LONDRA. ZOCCOLO LACCATO OPACO MANOPESCA GRIGIO LONDRA. TOP HPL CEMENT.

Un perfetto equilibrio di eleganza e carattere. Ante laccate opaco manopesca Grigio Londra, mensola in tinta, vetrine e ante con lavagna: sono i tratti che caratterizzano in modo originale e creativo Tabià. Forme, materiali e colori che trovano ispirazione nell'estetica post industriale e si allineano con le attuali tendenze del design più attuale.

ENG BASE DOOR/TALL UNITS/WALL UNITS MAT GRIGIO LONDRA LACQUERED PEACH SKIN. PLINTH MAT GRIGIO LONDRA LACQUERED PEACH SKIN. TOP HPL CEMENT.

A perfect balance of elegance and character. Grigio Londra peach skin mat lacquered doors, combined shelves, windows and doors with boards: these are the elements that characterize Tabià in an original creative way. Shapes, materials and colors that find inspiration in the post-industrial aesthetics and align to the state-of-the-art trends of design.

FR PORTE BASE/COLONNINES/MEUBLES SUSPENDUS LAQUÉ MAT PÊCHE GRIS LONDRES. PLINTHE LAQUÉ MAT PÊCHE GRIS LONDRES. TOP HPL CEMENT.

Un parfait équilibre entre élégance et caractère. Des portes laquées peau de pêche Gris Londres, des consoles assorties, des fenêtres et des portes avec ardoise: ce sont les motifs qui caractérisent de manière originale et créative Tabià. Des formes, des matériaux et des couleurs qui s'inspirent de l'esthétique post-industrielle et qui s'alignent sur les tendances actuelles du design le plus actuel.

PROGETTO 07
LACCATO OPACO MANOPESCA







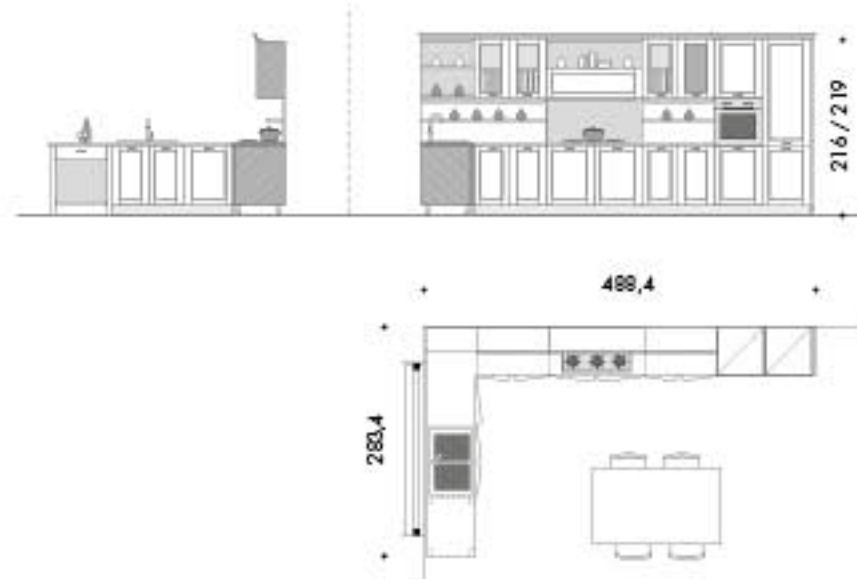


.....
 GLI APPUNTI VENGONO COSÌ
 SVILUPPATI CON DEI NORMALI
 GESSETTI COLORATI.

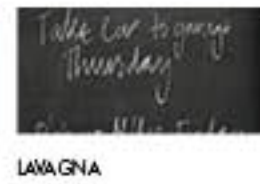
.....
 THE NOTES ARE THUS TAKEN BY
 NORMAL COLORED CHALKS.

.....
 LES PRESSE-PAPIERS SONT AINSI
 DÉVELOPPÉS AVEC DES CRAIES
 COLORÉES.

PROGETTO
PLAN
PROJECT



FINITURE FRONTALI
FRONT FINISHES
FAÇADES FINITION



MANIGLIA
HANDLE
POIGNEE



STRUTTURA
STRUCTURE
STRUCTURE



PIANO
TOP
PLAN DE TRAVAIL



ROMANTIC LINES

IT ANTA BASE/COLONNINE/PENSILI LACCATO OPACO MANOPESCA MADREPERLA. PIANO BANCONE PIETRA COMPOSITA BREEZE PEAR. ZOCCOLO LACCATO OPACO MANOPESCA MADREPERLA. TOP PIETRA COMPOSITA BREEZE PEAR.

Soft colors, sharp researched lines, a design of character: Tabià dà vita a una disposizione bella e funzionale, dove ogni spazio è fruibile e ragionato. Un ambiente dalla atmosfera romantica di altri tempi capace di rispondere alle esigenze di oggi.

ENG BASE DOOR/TALL UNITS/WALL UNITS MAT MADREPERLA LACQUERED PEACH SKIN. COUNTER SURFACE PIETRA COMPOSITA BREEZE PEAR. FINISH MAT MADREPERLA LACQUERED PEACH SKIN. TOP PIETRA COMPOSITA BREEZE PEAR.

Soft colors, sharp researched lines, a design of character: Tabià brings to life a beautiful functional arrangement, where every space is usable and thoughtfully devised. An environment of old-fashioned romantic atmospheres that can respond to today's needs.

FR PORTE BASE/COLONNINES/MEUBLES SUSPENDUS LAQUÉ MAT PEAU DE PÊCHE NACRE. PLAN DU COMPTOIR PIETRA COMPOSITA BREEZE PEAR. FINITHE LAQUÉ MAT PEAU DE PÊCHE NACRE. TOP PIETRA COMPOSITA BREEZE PEAR.

Des couleurs douces, des lignes claires et raffinées, un design de caractère: Tabià donne vie à un agencement beau et fonctionnel, où chaque espace est exploitable et raisonné. Une pièce où une ambiance romantique d'autan est capable de répondre aux besoins actuels.

PROGETTO 08
LACCATO OPACO MANOPESCA







.....
UNA COLONNINA DALLA PROFONDITÀ RIDOTTA PER AVERE LA LINEARITÀ CON I PENNELL E DARE INIZIO ALLA ZONA LIVING.
.....

A REDUCED DEPTH PILAR TO BE ALIGNED TO THE WALL UNITS AND START THE LIVING ROOM.
.....

UNE COLONNINE DONT LA PROFONDEUR EST RÉDUITE POUR AVOIR LA LINÉARITÉ AVEC LES MEUBLES SUSPENDUS ET DONNER VIE AU COIN SÉJOUR.
.....

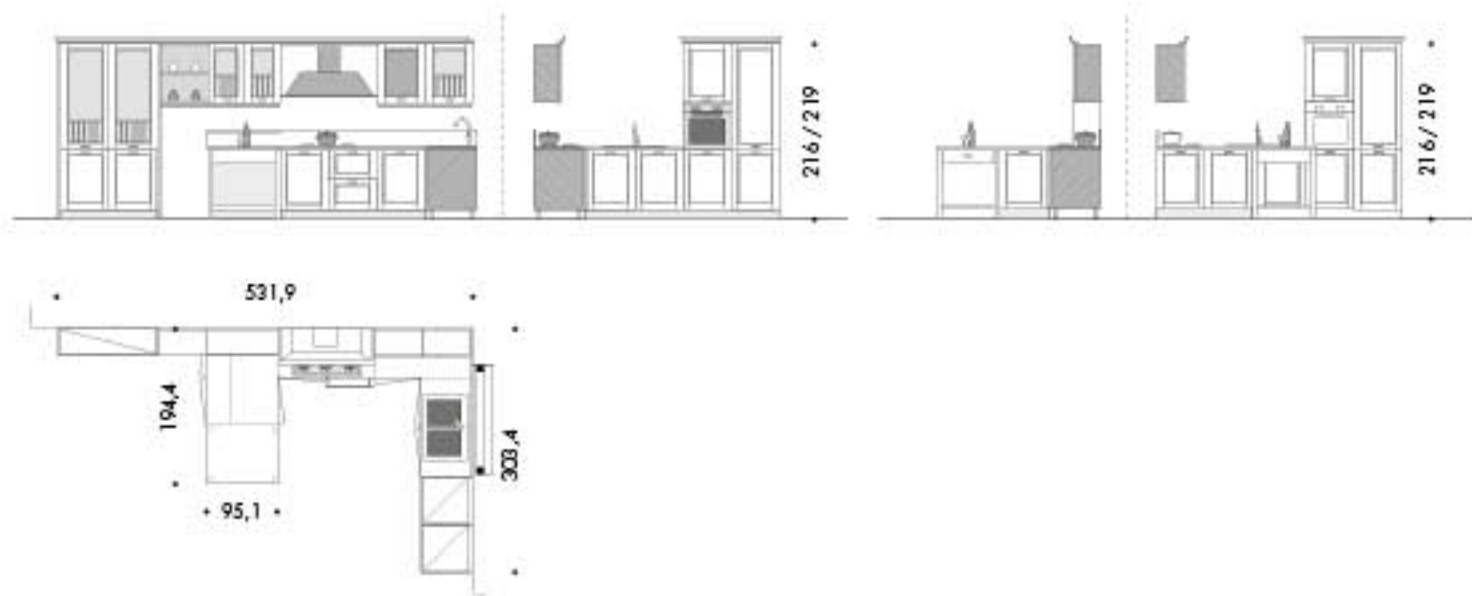


.....
IL BANCONE COME SPAZIO
D'APPOGGIO PER LA ZONA
LAVORI.

.....
THE COUNTER AS A SUPPORT
SPACE FOR THE WORKING AREA.

.....
LE COMPTOIR COMME ZONE
D'APPOINT POUR L'ESPACE DE
TRAVAIL.

PROGETTO
PLAN
PROJECT

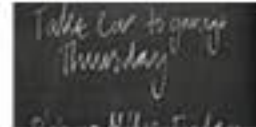


FINITURE FRONTALI
FRONT FINISHES
FAÇADES FINITION

Madreperla



LACCATO OPACO
MANOPESCA



LAVAGNA

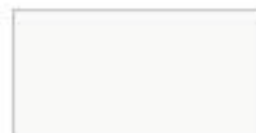
MANIGLIA
HANDLE
POIGNEE

Antique Brown



LOCKER

STRUTTURA
STRUCTURE
STRUCTURE



BIANCO

PIANO
TOP
PLAN DE TRAVAIL

Breeze pear



PIETRA COMPOSITA

PIANO BANCONE
COUNTERTOP
SURFACE DU DE
TABLE

Breeze pear



PIETRA COMPOSITA



COZY PLACES

IT ANTA BASE/COLONNINE/PENSILI LACCATO OPACO MANOPESCA MADREPERLA. ZOCCHIO LACCATO OPACO MANOPESCA MADREPERLA. TOP PIETRA COMPOSITA GOBY GREY.

Solida e curata in ogni suo dettaglio, dai materiali alle soluzioni tecniche adottate. Digno di nota è il sistema di ante scorrevoli della vetrina. Old Asolo è la scelta perfetta per chi è alla ricerca di una soluzione al di là della moda, calda e accogliente.

ENG. BASE DOOR/TALL UNITS/WALL UNITS. MAT MADREPERLA LACQUERED PEACH SKIN. FINISH MAT MADREPERLA LACQUERED PEACH SKIN. TOP PIETRA COMPOSITA GOBY GREY.

Solid and researched in every detail: from the materials to the technical solutions adopted. The sliding door window system is worth being noticed. Old Asolo is the perfect choice for those who are looking for a warm, welcoming solution, beyond any fashion.

FR. PORTE BASE/COLONNINES/MEUBLES SUSPENDIUS. LAQUÉ MAT PEAU DE PÊCHE NACRE. FUNITHE LAQUÉ MAT PEAU DE PÊCHE NACRE. TOP PIETRA COMPOSITA GOBY GREY.

Solide et soignée dans les moindres détails, des matériaux aux solutions techniques adoptées. Le système de portes coulissantes de la vitrine est digne d'être remarqué. Old Asolo est le choix idéal pour ceux qui sont à la recherche d'une solution qui transcende les modes, chaude et accueillante.

PROGETTO 09
LACCATO OPACO MANOPESCA







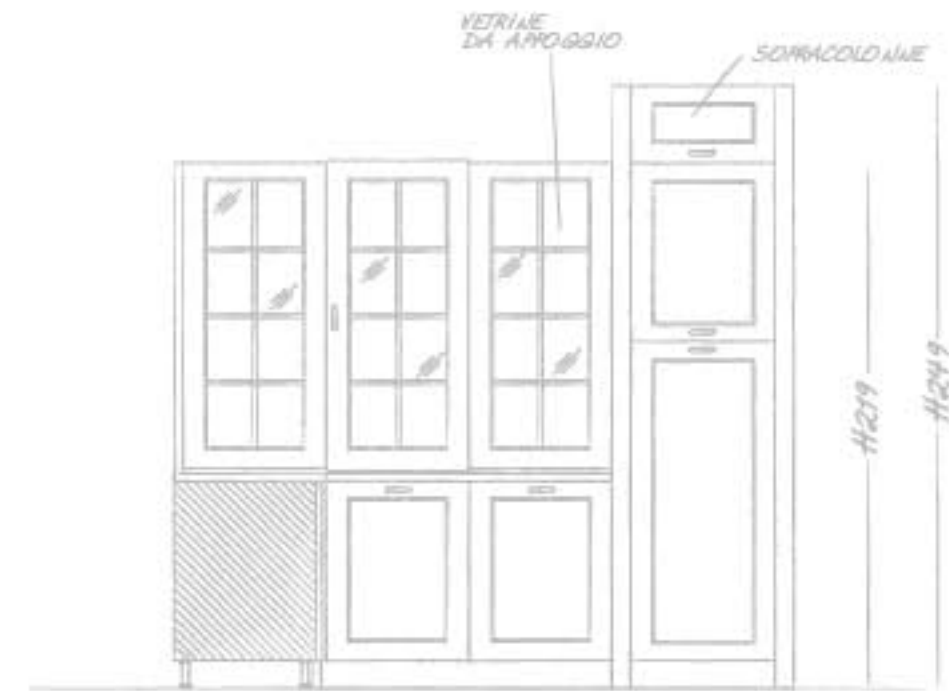


.....
NUOVI SPAZI SVILUPPATI CON
LA RICERCA DI NUOVI ARTICOLI
COME IL PENSAIE A PORTE
SCORREVOLI.

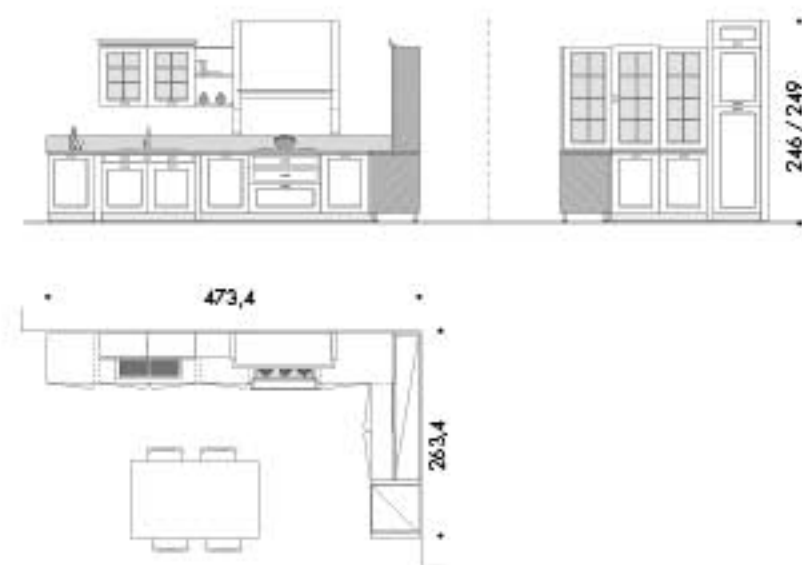
.....
NEW SPACES DEVELOPED BY
SEARCHING NEW ELEMENTS,
SUCH AS THE SLIDING DOOR
WALL UNIT.

.....
DE NOUVEAUX ESPACES
DÉVELOPPÉS AVEC LA RECHERCHE
DE NOUVEAUX ARTICLES COMME
LE MEUBLE MURAL À PORTES
COUSSANTES.





PROGETTO
PLAN
PROJECT



FINITURE FRONTALI
FRONT FINISHES
FAÇADES FINITION

Madraperta

LACCATO OPACO
MANOPESCA

MANIGLIA
HANDLE
POIGNEE

Gold

PETRA

STRUTTURA
STRUCTURE
STRUCTURE

BIANCO

PIANO
TOP
PLAN DE TRAVAIL

Goby grey

PIETRA COMPOSTA



ENGLISH STYLE

IT ANITA BASE/COLONNE/PENSILI LACCATO OPACO MANOPESCA GRIGIO LONDRA. ZOCCOLO LACCATO OPACO MANOPESCA GRIGIO LONDRA. TOP HPL CALCATTA.

Passione, carattere e qualità, sono le caratteristiche di questa composizione di Old Asolo. La latta laccata opaca manesca Grigio Londra conferisce un'atmosfera ricca di calore, l'utilizzo di materiali scelti e le fatture artigianali ne fanno un piccolo capolavoro.

ENG. BASE DOOR/TAIL UNITS/WALL UNITS MAT GRIGIO LONDRA. LACQUERED PEACH SKIN. PLINTH MAT GRIGIO LONDRA. LACQUERED PEACH SKIN. TOP HPL CALCATTA.

Passion, character and quality are the features of this Old Asolo composition. The Grigio Londra mat peach skin lacquered shade provides an atmosphere rich in warmth; the use of selected material and craftsmanship processing make of it a small masterpiece.

FR. PORTE BASE/COLONNES/MEUBLES SUSPENDUS LAQUÉ MAT PEAU DE PÊCHE GRIS LONDRES. PLINTE LAQUÉ MAT PEAU DE PÊCHE GRIS LONDRES. TOP HPL CALCATTA.

Passion, caractère et qualité sont les caractéristiques de cet agencement d'Old Asolo. Le coloris laqué mat agressif Gris Londres rend l'atmosphère chaleureuse, l'utilisation de matériaux sélectionnés et les détails dignes d'un travail d'artisan en font un petit chef d'œuvre.

PROGETTO 10
LACCATO OPACO MANOPESCA





STILE RIGOROSAMENTE ENGLISH MOOD PER LA COREOGRAFIA DI UNA OLD ASOLO DAI TONI AUSTERI E RIGOROSI.

A RIGOROUSLY "ENGLISH MOOD" STYLE FOR THE CHOREOGRAPHY OF AN OLD ASOLO OF AUSTERE RIGOROUS SHADES.

STYLE RIGOREUSEMENT "ENGLISH MOOD" POUR LA CHORÉGRAPHE D'UNE OLDASOLO AUX TONS AUSTÈRES ET RIGOREUX.





PROGETTO
PLAN
PROJECT



FINITURE FRONTALI
FRONT FINISHES
FAÇADES FINITION

Grigio Londra



LACCATO OPACO
MANOPESCA

MANIGLIA
HANDLE
POIGNEE

Gold



PETRA

STRUTTURA
STRUCTURE
STRUCTURE



COLONIALE

PIANO
TOP
PLAN DE TRAVAIL

Calcatta



HPL STRATIFICATO



OPEN KITCHEN

IT: ANTA BASE/COLONNINE/PENSILI LACCATO OPACO MANOPESCA BIANCO NEVE. PIANO BANCONE FENIX BIANCO ALASKA. ZOCCOLO LACCATO OPACO MANOPESCA BIANCO NEVE. TOP FENIX BIANCO ALASKA.

Originale ed elegante, Old Asolo fonde elementi classici con le funzionalità più attuali. Spazi che si organizzano e si aprono al living, con forme e materiali tradizionali. Tra i tratti principali il grande bancone con vani a giorno verso il soggiorno.

ENG: BASE DOOR/TALL UNITS/WALL UNITS MAT SNOW PEACH SKIN LACQUERED. COUNTER SURFACE FENIX ALASKA WHITE. FINISH MAT SNOW PEACH SKIN LACQUERED. TOP FENIX ALASKA WHITE.

Original and elegant, Old Asolo melts classic elements to the most modern functionality. Spaces that organize and open to the living room, in traditional shapes and materials. Amongst the main features, the large counter with open areas towards the living room.

FR: PORTE BASE/COLONNIES/MEUBLES SUSPENDUS LAQUÉ MAT PEAU DE PÊCHE NEIGE. PLAN DU COMPTOIR FENIX BIANC ALASKA. FINITHE LAQUÉ MAT PEAU DE PÊCHE NEIGE. TOP FENIX BIANC ALASKA.

Original et élégant, Old Asolo associe des éléments classiques avec les fonctionnalités les plus actuelles. Des espaces qui s'organisent et s'ouvrent vers le séjour, avec des formes et des matériaux classiques. Parmi les principales caractéristiques le grand comptoir avec des niches vers le séjour.

PROGETTO 11
LACCATO OPACO MANOPESCA









PROGETTO 11
LACCATO OPACO MANOPESCA

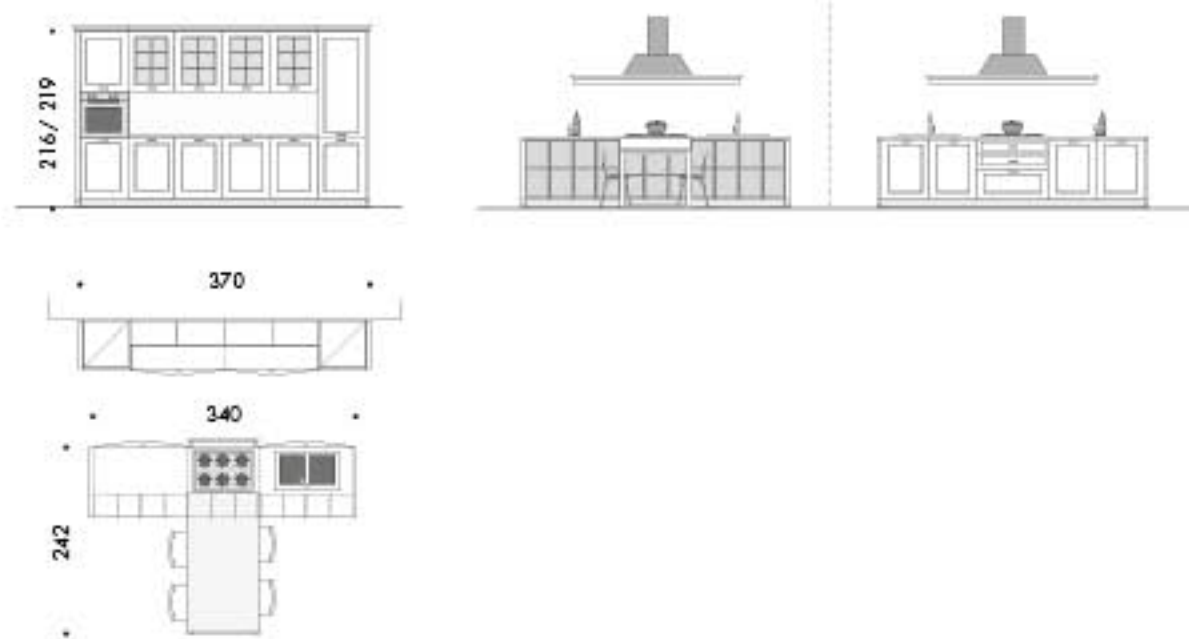


.....
CENTRO STANZA CON UN
GIUOCO DI MOVIMENTI DELLE
BASI E DEL TAVOLO .
.....

.....
ROOM CENTER WITH A PLAY
OF MOVEMENTS OF BOTH THE
BASES AND THE TABLE.
.....

.....
CENTRE DE PIÈCE AVEC UN JEU DE
MOUVEMENTS DES BASES ET DE
LA TABLE.
.....

PROGETTO
PLAN
PROJECT



FINITURE FRONTALI
FRONT FINISHES
FAÇADES FINITION

Bianco Neve



LACCATO OPACO
MANOPESCA

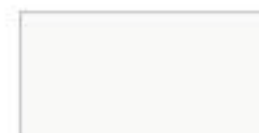
MANIGLIA
HANDLE
POIGNEE

Gold



PETRA

STRUTTURA
STRUCTURE
STRUCTURE



BIANCO

PIANO
TOP
PLAN DE TRAVAIL

Bianco Alaska



FENIX

PIANO BANCONE
COUNTERTOP
SURFACE DU DE
TABLE

Bianco Alaska



FENIX

CLASSIC LOOK

IT ANITA BASE/COLONNE/PENSILI LACCATO OPACO MANOPESCA BIANCO. ZOCCHIO LACCATO OPACO MANOPESCA BIANCO. TOP PIETRA COMPOSITA SPACCO NERO.

Old Asolo bella e comoda da vivere; un progetto intelligente per soddisfare le esigenze di vita contemporanea. La composizione ad "L" accoglie elementi contenitivi di grande capienza come basi e colonne, per terminare con mensole e basi ribassate a creare un angolo living.

ENG. BASE DOOR/TALL UNITS/WALL UNITS MAT WHITE LACQUERED PEACH SKIN. FINISH MAT WHITE LACQUERED PEACH SKIN. TOP PIETRA COMPOSITA SPACCO NERO.

Old Asolo is beautiful and comfortable to be lived; an intelligent project to meet the requirements of contemporary life. "L" composition hosts storage elements of large capacities, such as bases and tall units, to end by lowered shelves and bases that create a "living room" area.

FR. PORTE BASE/COLONNES/MEUBLES SUSPENDUS LAQUÉ MAT PEAU DE PÊCHE BLANC. FINITION LAQUÉ MAT PEAU DE PÊCHE BLANC. TOP PIETRA COMPOSITA SPACCO NERO.

Old Asolo belle et pratique au quotidien; un projet intelligent pour satisfaire les besoins de la vie moderne. L'agencement en forme de "L" accueille des éléments se caractérisant par une grande capacité comme des bases et des colonnes, pour terminer avec des consoles et des bases surbaissées pour créer un coin séjour.

PROGETTO 12
LACCATO OPACO MANOPESCA









.....
LIVING SEMPLICE E CONCISO
DEDICATO ALLA CONTINUITÀ
DELLA ZONA CUCINA.

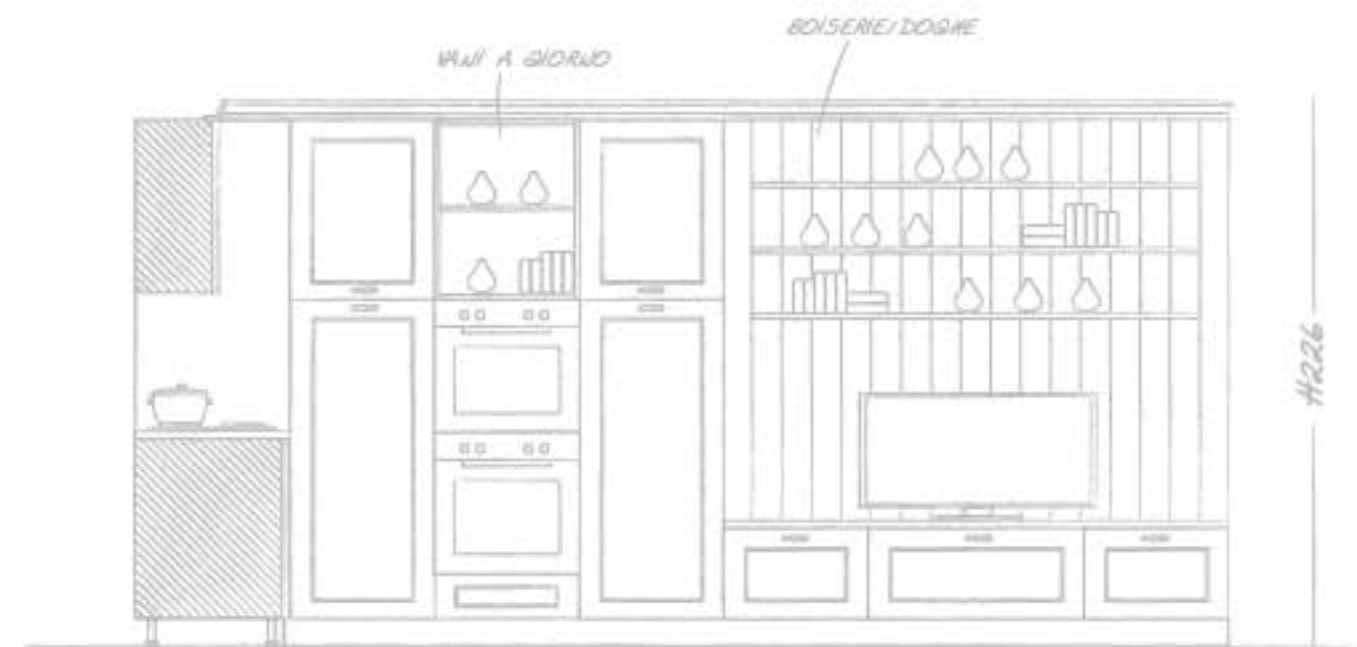
.....
SIMPLE, CONCISE LIVING ROOM
DEDICATED TO THE CONTINUITY
OF THE KITCHEN AREA.

.....
SÉJOUR SIMPLE ET CONCIS
DANS LA CONTINUITÉ DU COIN
CUISINE.





PROGETTO 12
LACCATO OPACO MANOPESCA



AREA LIVING
base ribassata +
mensole

PROGETTO
PLAN
PROJECT



FINITURE FRONTALI
FRONT FINISHES
FAÇADES FINITION

Bianco

LACCATO OPACO
MANOPESCA

MANIGLIA
HANDLE
POIGNEE

Gold

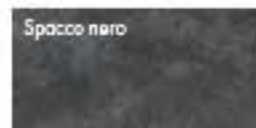
PETRA

STRUTTURA
STRUCTURE
STRUCTURE



COLONIALE

PIANO
TOP
PLAN DE TRAVAIL



PIETRA COMPOSITA



SHADES OF LIGHT

IT ANTA BASE/PENSILI/COLONNINE LACCATO TALCATO CANAPA. ZOCCHIO FRASSINATO CANAPA. TOP LAMINATO UNICOLOR ANTRACITE.

Esclusiva e di grande charme: Lucy riscalda il cuore.

Ha il sapore squisitamente mediterraneo di una mattina estiva, quando il sole si alza e riempie di magnificenza la casa. Il candore delle tonalità naturali del legno e l'essenzialità della composizione, le conferiscono grande fascino e raffinatezza. Lucy è dedicata a chi sceglie di vivere in armonia con la natura e con la terra.

ENG BASE/WALL UNIT/TALL UNIT DOOR LACQUERED POWDERED HEMP. FINISH HEMP LACQUERED ASH. TOP ANTHRACITE LAMINATED UNICOLOR.

Exclusive and charming: Lucy warms the heart.

It has the exquisitely Mediterranean flavor of a summer morning when the sun rises and fills the house magnificently. The candor of the natural wood hues and the essential layout give it great charm and elegance. Lucy is dedicated to those who chose to live in harmony with nature and the earth.

FR PORTES SUR ÉLÉMENTS BAS/ÉLÉMENTS HAUTS/COLONNINES LAQUÉES "CANAPA" FINITION POUDDRE DE TALC. SOCLE "CANAPA" FINITION FRÊNE. PLAN DE TRAVAIL STRATIFIÉ UNICOLOR ANTHRACITE.

Charmante et exclusive: Lucy réchauffe le cœur. Elle a le savoir typiquement méditerranéen d'un matin d'été, quand le soleil se lève et remplit la maison de beauté. La blancheur des tons naturels du bois et l'essenzialité de la composition, donnent charme et sophistication. Lucy est consacrée à ceux qui choisissent de vivre en harmonie avec la nature et avec la terre.

PROGETTO 13
LACCATO TALCATO CANAPA





.....
LUMINOSITÀ È LA PRIMA PAROLA
CHE VIENE IN MENTE NEL
GUARDARE LUCY IN FINITURA
TALCATO CANAPA.

.....
BRIGHTNESS IS THE FIRST WORD
THAT COMES TO MIND WHEN
LOOKING AT LUCY WITH THE
POWDERED HEMP FINISH.

.....
LUMINOSITÉ EST LE PREMIER MOT
QUI VIENT À L'ESPRIT QUAND
ON REGARDE LUCY EN FINITION
POUDRE DE TALC CHANVRE.





.....
IL CARO È MAI ABBANDONATO
SISTEMA DI MENSOLE A
CHIUSURA DELLE ZONE ALTE,
QUI CON LE PROPRIE CORNICI
SEMPRE IN TINTA.

.....
THE DEAR AND EVERLASTING
SYSTEM OF TOP SHELVES FOR THE
UPPER AREAS, HERE WITH THEIR
CORNICI IN THE SAME FINISH.

.....
LE CHER ET JAMAIS ABBANDONNÉ
SYSTÈME DE FERMETURE DES
NIVEAUX SUPÉRIEURS AVEC DES
BAIDAGUINS: ICI AVEC LEURS
PROPRIES CORNICHEs TOUJOURS
DANS LE MÊME TON.

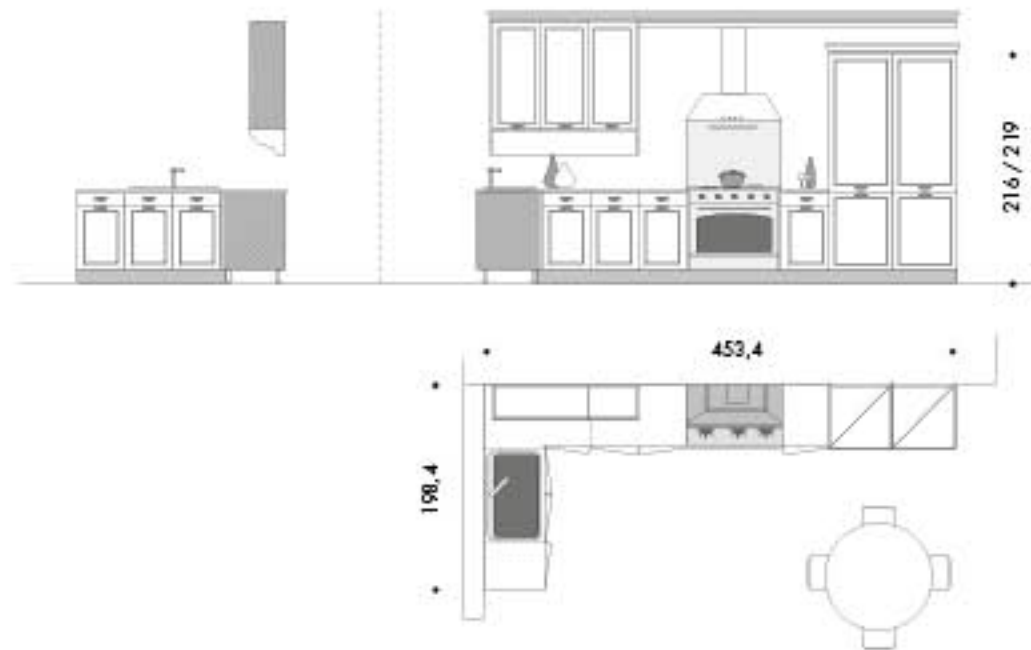
.....
LUCY NEL PIENO DELLA SUA
ELEGANZA PUÒ ESSERE ANCHE
INTERPRETATA PER AMBIENTI UN
PO' CHIC.

.....
THE LUCY LINE IN ALL ITS
ELEGANCE CAN ALSO BE
ENVISIONED FOR MORE CHIC
ENVIRONMENTS.

.....
LUCY DANS LE MAXIMUM DE
SON ÉLÉGANCE PEUT ÊTRE
AUSSI LA RÉPONSE POUR DES
AMBIANCES CHIC.



PROGETTO
PLAN
PROJECT



FINITURE FRONTALI
FRONT FINISHES
FAÇADES FINITION

Canapa

LACCATO TALCATO

MANIGLIA
HANDLE
POIGNEE



LILLY

STRUTTURA
STRUCTURE
STRUCTURE



COLONIALE

PIANO
TOP
PLAN DE TRAVAIL

Antracite

LAMINATO UNICOLOR



COUNTRY LOFT

IT ANTA BASE/PENSILI/COLONNINE LACCATO TALCATO CANAPA. ELEMENTI A GIORNO LACCATO TALCATO CANAPA E SAUS. PIANO BANCONE LAMINATO UNICOLOR ANTRACITE. ZOCCOLO FRASSINATO CANAPA. TOP LAMINATO UNICOLOR ANTRACITE.

Volumi importanti e disposizione libera per una cucina dinamica, da vivere ogni giorno. L'isola centrale è il fulcro di ogni attività. Non solo piano di lavoro e di preparazione del cibo, ma anche piano d'appoggio per consumare i pasti e svolgere le attività quotidiane. Elementi a giorno di basi e pensili, mensole e vani a giorno, contribuiscono ad infondere un'atmosfera provençale, e soddisfano con stile le esigenze funzionali più moderne.

ENG. BASE/WALL UNIT/TALL UNIT DOOR LACQUERED POWDERED HEMP. OPEN ELEMENTS LACQUERED POWDERED HEMP AND SAUS. COUNTER TOP ANTHRACITE LAMINATED UNICOLOR. FINISH HEMP LACQUERED ASH. TOP ANTHRACITE LAMINATED UNICOLOR.

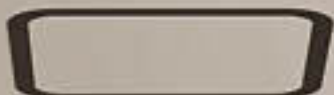
Important sizes and free layout for a dynamic kitchen to be lived in every day. The central island is the focal point of every activity. Not only as worktop and work area, but also as a place to eat a meal and do daily activities. The open elements of the bases and wall units, the shelves and open spaces, all contribute to the Provençal atmosphere and satisfy the most modern needs in style.

FR. PORTES SUR ÉLÉMENTS BAS/ÉLÉMENTS HAUTS/COLONNINES LAQUÉES "CANAPA". FINITION POUDDRE DE TALC. ÉLÉMENTS OUVERTS LAQUÉES "CANAPA" ET "SAUS". FINITION POUDDRE DE TALC. PLAN DU COMPTOIR EN STRATIFIÉ UNICOLOR "ANTRACITE". SOCIÉ "CANAPA" FINITION FRÈNE. PLAN DE TRAVAIL STRATIFIÉ UNICOLOR "ANTRACITE".

Volumes importants et libre disposition pour une cuisine dynamique à vivre tous les jours. L'îlot est la plaque tournante de toutes les activités. Non seulement plan de travail et préparation de la nourriture, mais aussi support pour consommer les repas et effectuer les activités quotidiennes. Éléments bas et hauts ouverts, baldaquins et niches, contribuent à créer une ambiance provençale, et répondent avec style aux exigences fonctionnelles les plus modernes.

PROGETTO 14
LACCATO TALCATO CANAPA





.....
SPAZI ILLUMINOSI GRAZIE AD
UNA DISPOSIZIONE CURATA
DEGLI ELEMENTI, MAI TROPPO
SOFFOCANTE: L'ISOLA È IL
SOGGETTO PRINCIPALE.
.....

BRIGHT SPACES THANKS TO THE
CARE TAKEN IN THE LAYOUT OF
THE ELEMENTS THAT ARE NEVER
TOO OPPRESSIVE: THE ISLAND IS
THE MAIN POINT OF INTEREST.
.....

ESPACE ILLUMINEUX GRÂCE À
UNE DISPOSITION SOIGNÉE
DES ÉLÉMENTS, JAMAIS TROP
IMPORTANT, L'ÎLOT EST LE SUJET
PRINCIPAL.
.....





.....

GLI ELEMENTI A GIORNO SONO UN MOTIVO PRELIMINARE NELLA COMPOSIZIONE LUCY: PENSIE, COLONNINE E BASI POSSONO ESSERE COSÌ DEGLI SPAZI OPEN-SPACE CHE DANNO GIUOCO A CONTINUE FANTASIE INTERPRETATIVE.

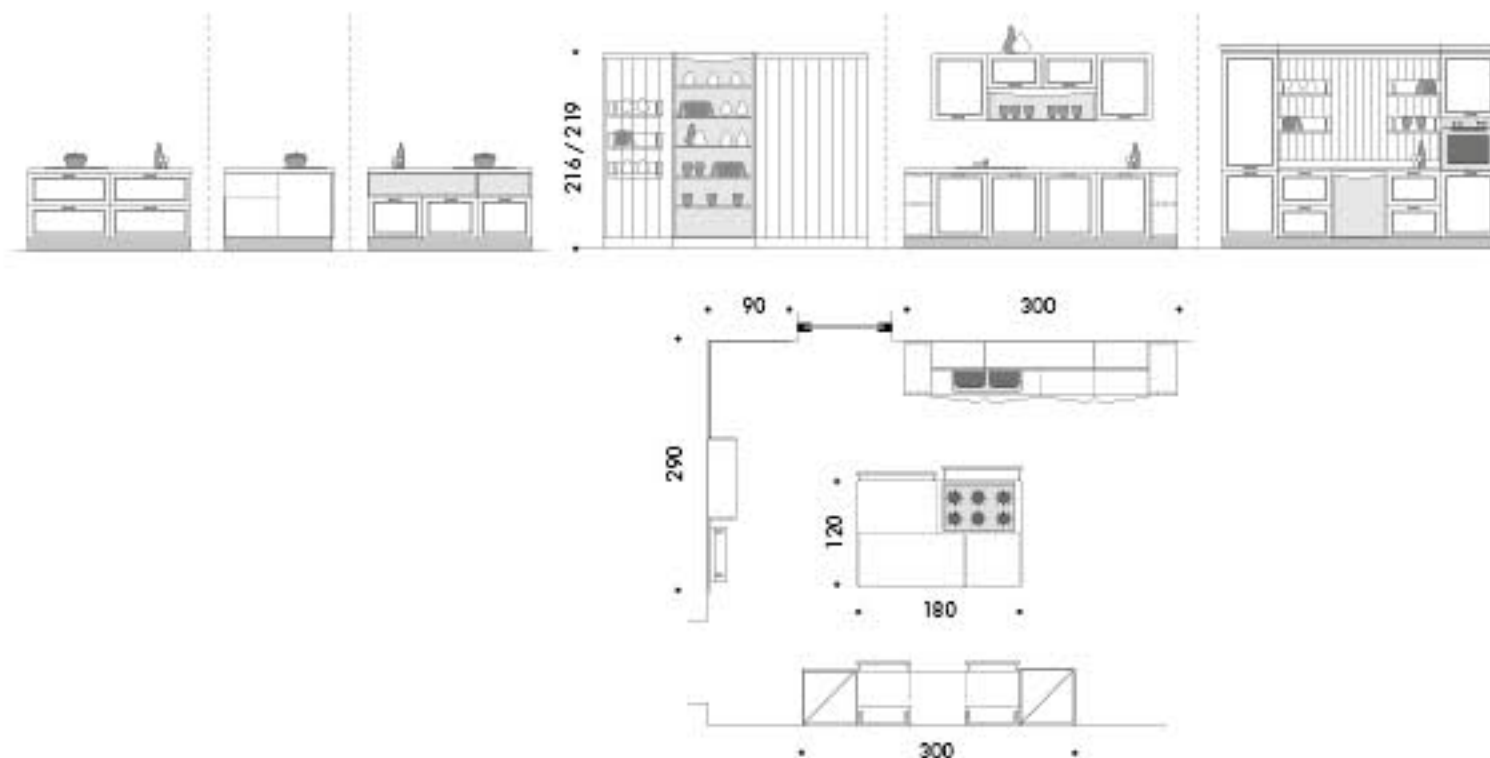
.....

THE OPEN ELEMENTS ARE A FOCAL POINT IN THE LUCY COMPOSITION: WALL UNIT, TALL UNIT AND BASES CAN BE OPEN SPACES THAT LEAVE ROOM FOR DIFFERENT INTERPRETATIONS.

.....

LES ÉLÉMENTS OUVERTS SONT DES ÉLÉMENTS DE CARACTÈRE DANS LA COMPOSITION DE LUCY: LES ÉLÉMENTS HAUTS SUSPENDUS, LES COLONNINE ET LES ÉLÉMENTS BAS PEUVENT AINSI CRÉER DES ESPACES LIBRES QUI LAISSENT LA LIBERTÉ AUX INTERPRÉTATIONS DE LA FANTASIE.

PROGETTO
PLAN
PROJECT



FINITURE FRONTALI
FRONT FINISHES
FAÇADES FINITION

Canapa



LACCATO TALCATO

MANIGLIA
HANDLE
POIGNEE



LILY

STRUTTURA
STRUCTURE
STRUCTURE

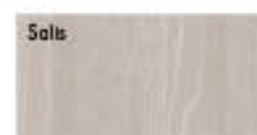


BIANCO

ELEMENTI A GIORNO
OPEN ELEMENTS
ÉLÉMENTS OUVERTS



LACCATO TALCATO



LACCATO TALCATO

PIANO
TOP
PLAN DE TRAVAIL



LAMINATO UNICOLOR

PIANO BANCONE
COUNTERTOP
SURFACE DU DE
TABLE



LAMINATO UNICOLOR

COLONIAL STYLE

IT ANTA BASE/PENSILI/COLONNINE DÉCAPÉ CANAPA. ELEMENTI A GIORNO ROVERE SCURO. PIANO BANCONE IMPALLAOCIATO CASTAGNO. ZOCCOLO DÉCAPÉ CANAPA. TOP K WORK GRAIN.

Atmosfera romantica. Riva 68 profuma di passione per tradizione ed artigianato. L'eleganza senza tempo dell'anta a telaio e la trasparenza del vetro decorato, sono i tratti distintivi di questa composizione. Un ambiente intimo, curato nei minimi dettagli, ma che non rinuncia ai vantaggi di una razionalizzazione di spazi e volumi. Ne sono testimonianza il lavello incassato a filo piano cucina e l'utilizzo di vari attrezzati. Un progetto all'insegna del recupero delle migliori tradizioni artigianali, riproposto con gusto per un effetto scenico affascinante.

ENG BASE/WALL UNIT/TALL UNIT DOOR STRIPPED HEMP. OPEN ELEMENTS DARK OAK. COUNTER TOP VENEERED CHESTNUT. FINISH STRIPPED HEMP. TOP K WORK GRAIN.

Romantic atmosphere. Riva 68 evokes passion for tradition and craftsmanship. The timeless elegance of the frame door and transparency of the decorated glass are distinctive traits of this composition. An intimate atmosphere, with attention to every detail, but that has the advantage of space and size. This is evident in the built-in sink flush with the top and the use of equipped elements. A project that is all about recovering the best craftsman traditions with a fascinating final effect.

FR PORTE ÉLÉMENTS BAS/ÉLÉMENTS HAUTS/COLONNINES CÉRUSÉES CHANVRE. ÉLÉMENTS OUVERTS CHÊNE FONCÉ. PLAN DU COMPTOIR PLAQUÉ CHATAIGNIER. SOCIÉ CÉRUSE CHANVRE. PLAN DE TRAVAIL K WORK GRAIN.

Atmosphère romantique. Riva 68 est le parfum de la passion pour la tradition et l'artisanat. L'élégance toujours actuelle de la porte avec encadrement et la transparence du verre décoré, sont les traits qui distinguent cette composition. Une ambiance intime, soignée dans tous les détails, mais qui ne renonce pas aux avantages d'une réalisation d'espaces et de volumes, comme le témoignent l'évier encastré affleurant sur le plan de la cuisine et l'usage d'espaces équipés. Un projet qui a pour but de redécouvrir les meilleures traditions artisanales, revues avec goût pour un effet scénique fascinant.

PROGETTO 15
DÉCAPÉ CANAPA





UNO STILE COLONIALE CON DEI
SAPORI TRADIZIONALI MOTIVATI
DALLA SCELTA DI ELEMENTI A
GIORNO IN CASTAGNO.

A COLONIAL STYLE WITH A
TRADITIONAL FLARE MOTIVATED
BY THE CHOICE OF THE
CHESTNUTWOOD OPEN
ELEMENTS.

UN STYLE COLONIAL AVEC LE
GOÛT TRADITIONNEL, MOTIVÉ
PAR LE CHOIX DES ÉLÉMENTS
OUVERTS EN CHATAIGNIER.





PROGETTO 15
DÉCAPÉ CANAPA



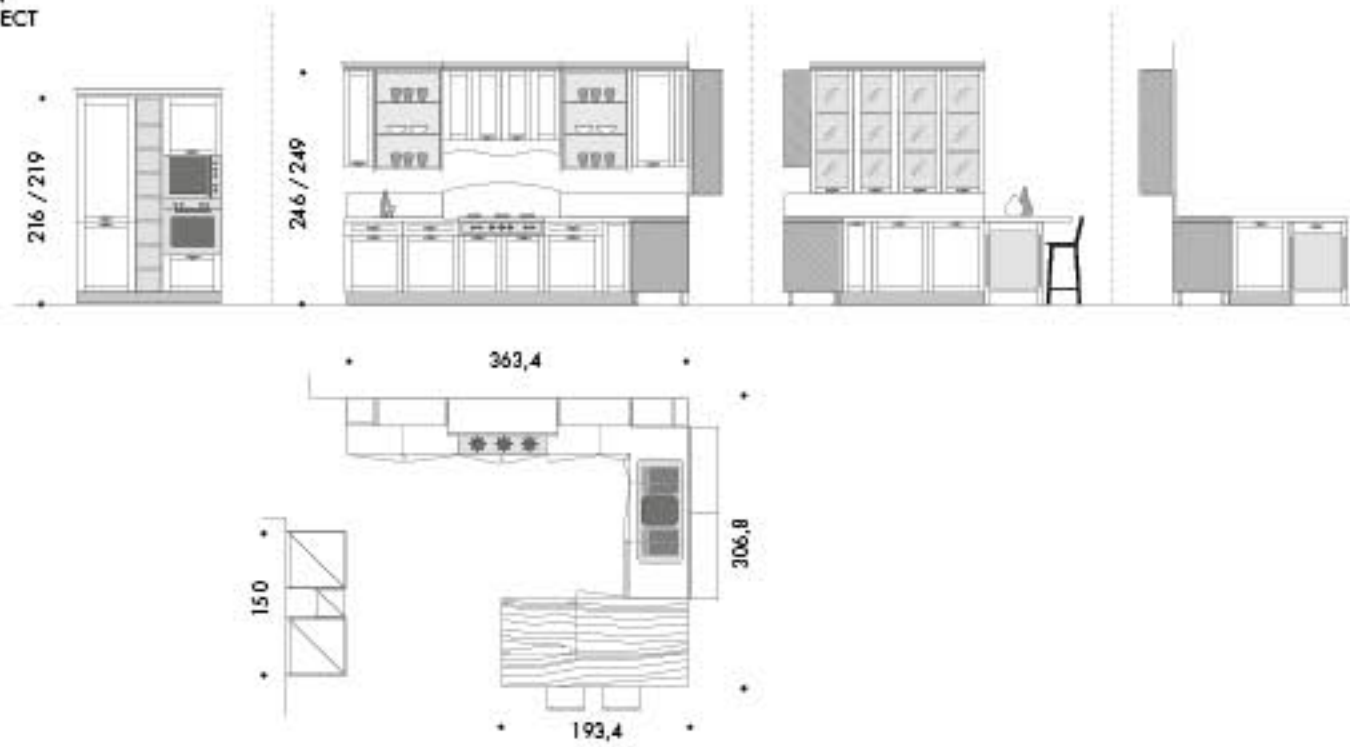
.....
LA MANIGLIA ROSY È IDEALE
PER QUESTO MODELLO: QUASI
AD ESSERE UN ELEMENTO DEL
PASSATO, RIVISTO.

.....
THE ROSY HANDLE IS IDEAL
FOR THIS MODEL: ALMOST LIKE
AN ELEMENT FROM THE PAST,
REDONE.

.....
LA POIGNÉE ROSY EST IDÉALE
POUR CE MODÈLE: COMME S'IL
S'AGISSAIT D'UN ÉLÉMENT DU
PASSÉ, RETROUVÉ.



PROGETTO
PLAN
PROJECT



FINITURE FRONTALI
FRONT FINISHES
FAÇADES FINITION

Canapa

DÉCAPÉ

MANIGLIA
HANDLE
POIGNEE



Rosy

STRUTTURA
STRUCTURE
STRUCTURE



COLONIALE

ELEMENTI A GIORNO
OPEN ELEMENTS
ÉLÉMENTS OUVERTS



IMPALLACCIATO

PIANO CUCINA
KITCHEN TOP
PLAN DE TRAVAIL
CUISINE



K WORK

PIANO BANCONE
COUNTERTOP
SURFACE DU DE
TABLE



IMPALLACCIATO

PROVENÇAL LOOK

IT ANTABASE/PENSIL/COLOMNE DÉCAPÉ CANAPA. ELEMENTI A GIORNO IMPIALLACCIATO CASTAGNO. PIANO BANCONONE K SPACE GLOSS. ZOCCOLO DÉCAPÉ CANAPA. TOP K SPACE GLOSS.

Ampli spazi di lavoro per una dimensione senza tempo. Il calore delle antiche emozioni. La bellezza del legno e la comodità degli ampi piani di lavoro. Con Riva 68 è facile riscoprire sensazioni lontane e rivivere le gesta semplici di una quotidianità d'altri tempi. L'intramontabile eleganza dell'anta a telaio unita alla cura per i dettagli, tra i quali vetri decorativi e preziosi pomoli in metallo anticato, ne fanno la scelta ideale per gli amanti della tradizione.

ENG BASE/WALL UNIT/TALL UNIT DOOR STRIPPED HEMP. OPEN ELEMENTS VENEERED CHESTNUT. COUNTER TOP K SPACE GLOSS. PLINTH STRIPPED HEMP. TOP K SPACE GLOSS.

Great work space that is timeless. The warmth of antique emotions. The beauty of wood and the convenience of great worktops. With Riva 68 it's easy to rediscover past feelings and relive the simple gestures of past routines. The ageless elegance of the frame door together with the attention to detail like the decorative glass and the precious knobs in antique-looking metal make it the ideal choice for those who love tradition.

FR PORTE ÉLÉMENTS BAS/ÉLÉMENTS HAUTS/COLONNES CÉRUSÉES CHANVRE. ÉLÉMENTS OUVERTS PLAQUÉS CHATAIGNIER. PLAN DU COMPTOIR K SPACE GLOSS. SOCLE CÉRUSÉ CHANVRE. PLAN DE TRAVAIL K SPACE GLOSS.

Grands espaces de travail pour une dimension toujours actuelle. La chaleur des émotions d'autrefois. La beauté du bois et la commodité des vastes plans de travail. Riva 68 fait facilement redécouvrir des sensations lointaines et revivre les simples gestes quotidiens des temps passés. L'élégance intemporelle de la porte avec encadrement combinée à l'attention pour les détails, comme les verres décoratifs et les précieux boutons en métal vieilli, en font le choix idéal pour les amoureux de la tradition.

PROGETTO 16
DÉCAPÉ CANAPA







.....
IO STILE CAMBIA, LA CUCINA
RIMANE SEMPRE LA STESSA: QUI
IN UN AMBIENTE PIÙ ILLUMINOSO
DAL FASCINO PROVENÇALE.

.....
THE STYLE CHANGES BUT
THE KITCHEN REMAINS THE
SAME: HERE IN A BRIGHTER
ENVIRONMENT WITH A
PROVENÇAL LOOK.

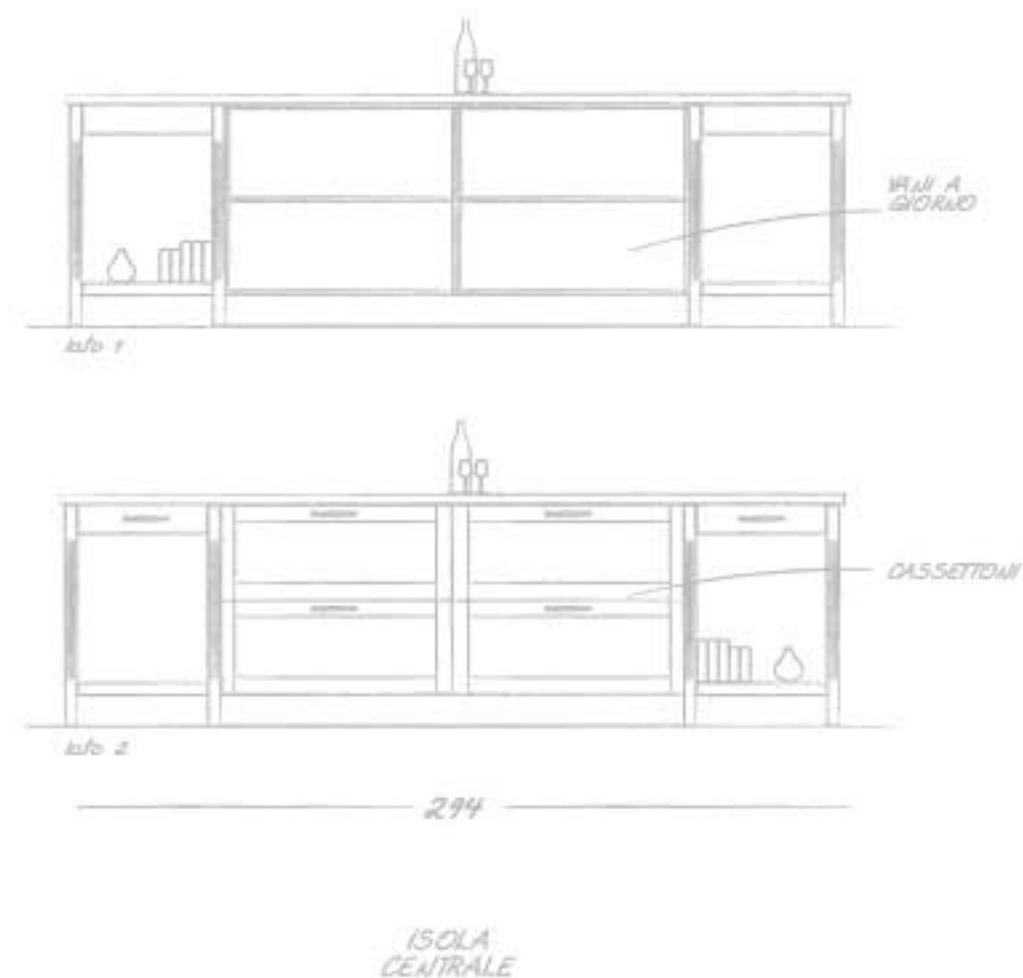
.....
LE STYLE CHANGE, LA CUISINE
EST TOUJOURS LA MÊME: ICI
DANS UN MILIEU PLUS ILLUMINÉ
AU CHARME PROVENÇAL.

LA SCELTA DI VETRINE DALLA
STRUTTURA CHIARA CON RIPIANI
IN CRISTALLO È INDIRIZZATA NEL
MANTENERE UN AMBIENTE PIÙ
REGALE.

THE SIMPLY STRUCTURED
CHINA CABINETS WITH
CRYSTAL SHELVES IS AIMED AT
MAINTAINING A MORE REGAL
ATMOSPHERE.

LE CHOIX DE LA VITRINE AVEC
LA STRUCTURE CLARE ET LES
ETAGÈRES EN CRISTAL, POUR
MAINTENIR UN ASPECT PLUS
ÉLEGANT.





.....
L'ISOLA CENTRALE È COMPOSTA
DA ELEMENTI CARATTERISTICI
A GIORNO PER PENISOLA
DISPONIBILI NELLE PROFONDITÀ
92 E 58,4 CM.
.....

THE CENTRAL ISLAND IS
COMPOSED OF TYPICAL OPEN
ELEMENTS FOR PENINSULAS
THAT CAN BE 92 AND 58.4 CM
DEEP.

.....
L'ÎLOT CENTRAL EST FORMÉ
PAR DES ÉLÉMENTS OUVERTS
DISPONIBLES EN PROFONDEUR
92 ET 58,4 CM.
.....

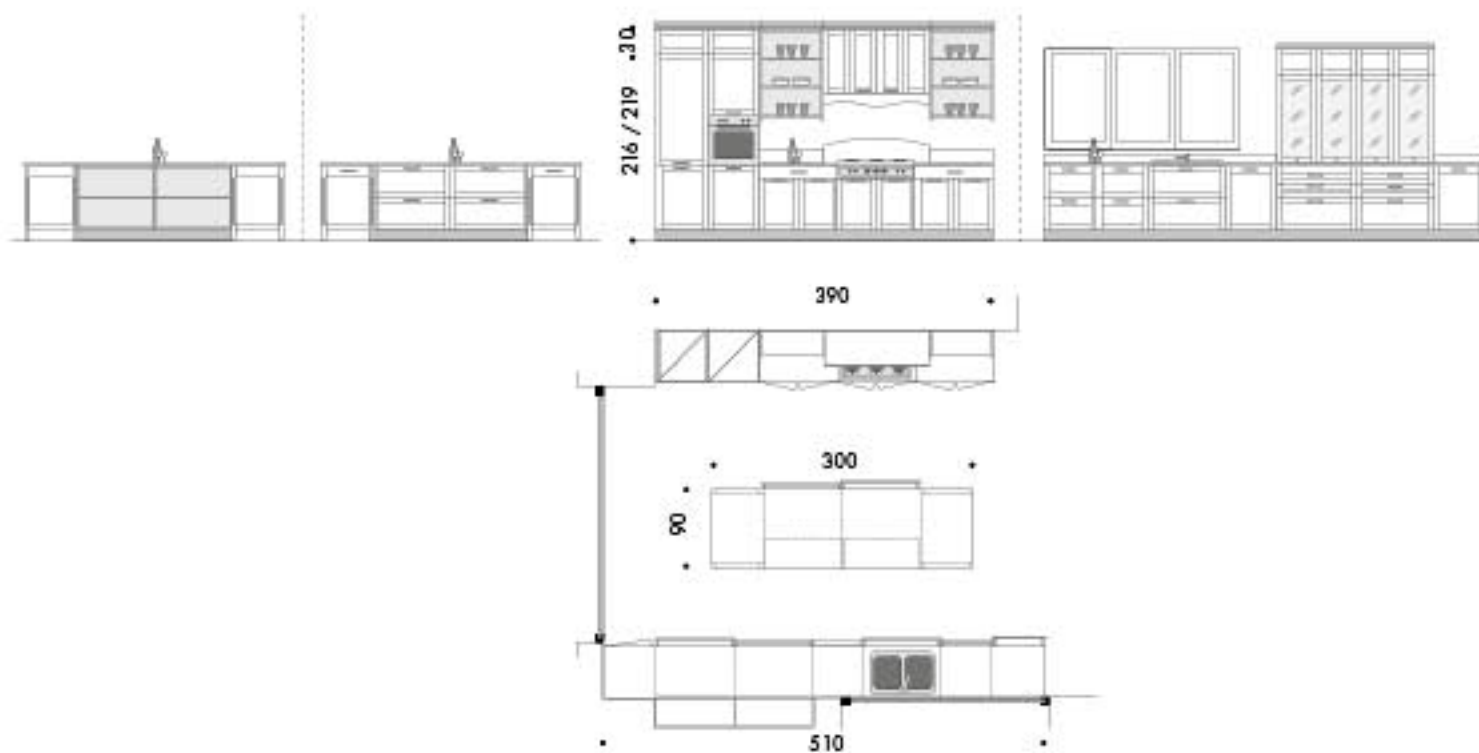
.....
SEMPRE DI UN STILE COLONIALE
LA CAPPA FUNZIONALE PER
RMA 68: L'ELEMENTO AD ANTE
A PACCHETTO FACILITÀ LO
STRAGGIO DELLE COSE.

.....
THE FUNCTIONAL RANGE
HOOD IS IN A COLONIAL STYLE
FOR RMA 68: THE ROMAN-STYLE
DOOR MAKES STORAGE EASY.

.....
TOUJOURS EN STYLE
COLONIAL LA HOTTE POUR
RMA 68. L'ÉLÉMENT AVEC
PORTES PLANTES FACILITE LE
RANGEMENT.



PROGETTO
PLAN
PROJECT



FINITURE FRONTALI
FRONT FINISHES
FAÇADES FINITION

Canapa



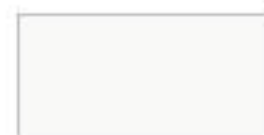
DÉCAPÉ

MANIGLIA
HANDLE
POIGNEE



ROSY

STRUTTURA
STRUCTURE
STRUCTURE



BIANCO

ELEMENTI A GIORNO
OPEN ELEMENTS
ÉLÉMENTS OUVERTS



IMPALLACCIATO

PIANO
TOP
PLAN DE TRAVAIL



K SPACE

PIANO BANCONE
COUNTERTOP
SURFACE DU DE
TABLE



K SPACE

TECHNICAL DATA





UN PASSO AVANTI

Il pensiero di una nuova veste per Louisiana arriva da una partenza sviluppata dal metallo: la cappa, la nuova ante e la maniglia stessa seguono questa tendenza.

A STEP FORWARD

The idea for a new guise for Louisiana comes from a starting point developed from metal: the hood, the new door and the handle itself follow this trend.

UN PAS EN AVANT

Le nouveau look de Louisiana est le fruit d'une idée de départ développée autour du métal: la hotte, la nouvelle porte et même la poignée suivent cette tendance.



Vetrina e cornice sono stati cambiati per essere più semplici e lineari, consoni alle forme di questo modello che trasmette la semplicità.

The window and the frame have been changed to be simpler and more linear, matching the shapes of this model that transmits simplicity.

La fenêtre et le cadre ont été changés pour être plus simples et plus linéaires, adaptés aux formes de ce modèle qui transmet la simplicité.





L'eleganza degli spessori accostati tra di loro come le mensole o i fianconi divisorii.

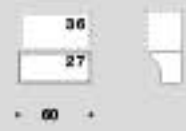
The elegance of the thicknesses approached to one another such as the shelves or the partition claddings.

L'élégance des épaisseurs assorties entre elles comme les consoles ou les séparations.



LOUISIANA

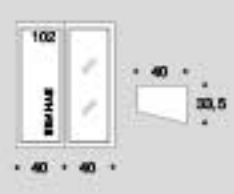
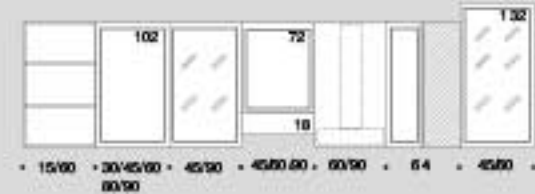
PENSILI
WALL UNITS
ÉLÉMENTS HAUTS
H 36/42/60cm



PENSILI
WALL UNITS
ÉLÉMENTS HAUTS
H 72cm



PENSILI
WALL UNITS
ÉLÉMENTS HAUTS
H 102/132cm



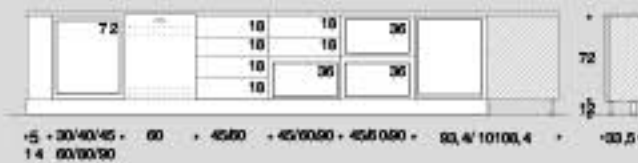
BASI
BASES
ÉLÉMENTS BAS



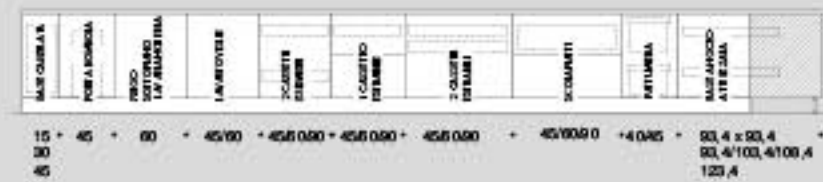
BASI
BASES
ÉLÉMENTS BAS



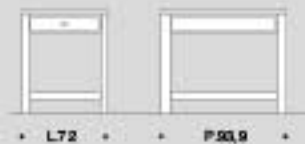
BASI
BASES
ÉLÉMENTS BAS
H 72/P 33,5cm



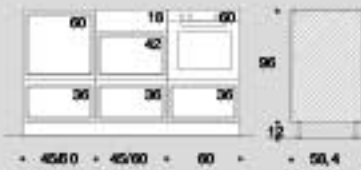
BASI ATTREZZATE
EQUIPPED BASES
ÉLÉMENTS BAS EQUIPÉS



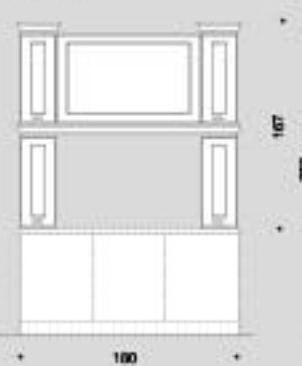
BASI A GIORNO
OPEN BASE
ÉLÉMENTS BAS OUVERTS



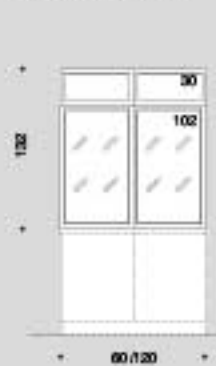
BASI "MIDI"
"MIDI" BASES
ELEMENT BASE "MIDI"



CAPPA
HOOD
FOUR



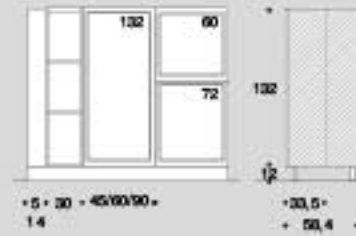
VETRINE DA APPOGGIO
COUNTERTOP GLASS CABINET
VITRINES EN APPLI



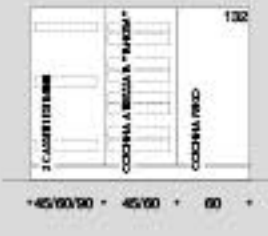
SOPRAPENSILE E SOPRACOLONNE
SUSPENDED WALL UNIT AND TALL UNITS
ÉLÉMENTS SUR MEUBLES HAUTS ET SUR ARMOIRES



COLONNE
TALL UNITS
ARMOIRES
H 132cm - P 33,5/58,4cm



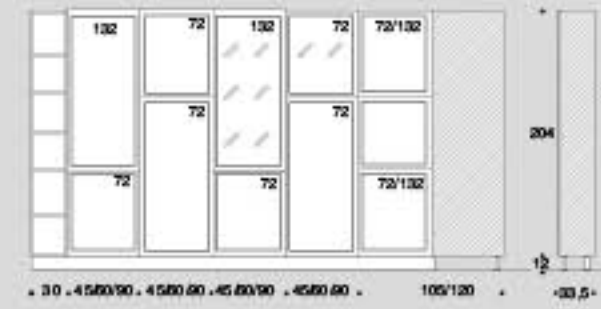
COLONNE ATTREZZATE
EQUIPPED TALL UNITS
ARMOIRES EQUIPÉS
H 132cm



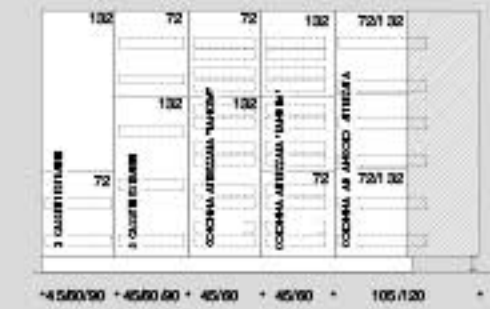
COLONNE FORNO
OVEN TALL UNITS
ARMOIRES POUR FOUR
H 132cm



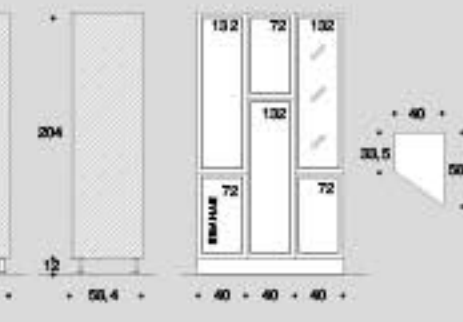
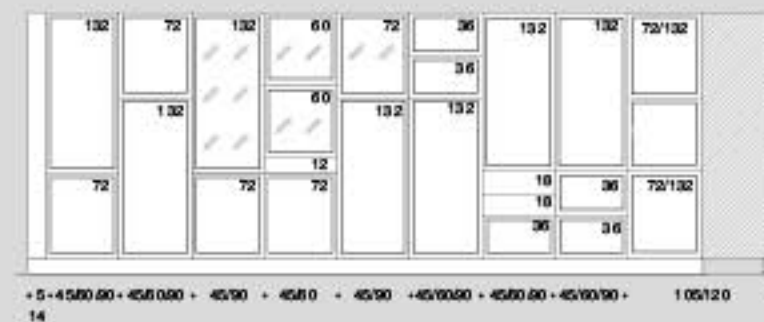
COLONNE
TALL UNITS
ARMOIRES
H 204cm - P 33,5cm



COLONNE ATTREZZATE
EQUIPPED TALL UNITS
ARMOIRES EQUIPÉS
H 204cm



COLONNE
TALL UNITS
ARMOIRES
H 204cm



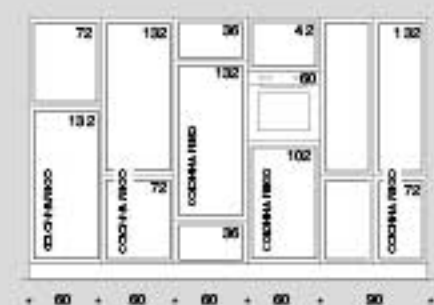
CANTINETTA
WINE COOLER
CELLIER



COLONNE FORNO
OVEN TALL UNITS
ARMOIRES POUR FOUR
H 204cm



COLONNE FRIGO
REFRIGERATOR TALL UNITS
ARMOIRES POUR REFRIGÉRATEUR
H 204cm

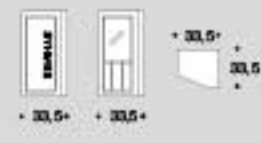


TABIA

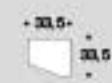
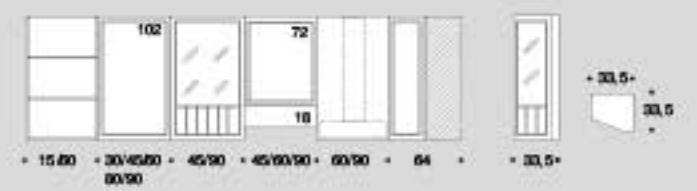
PENSILI
WALL UNITS
ELEMENTS HAUTS
H 36/42/60cm



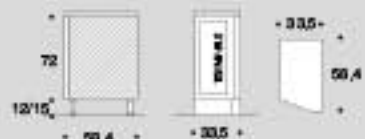
PENSILI
WALL UNITS
ELEMENTS HAUTS
H 72cm



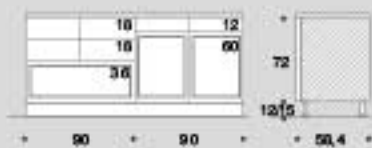
PENSILI
WALL UNITS
ELEMENTS HAUTS
H 102/132cm



BASI
BASES
ELEMENTS BAS



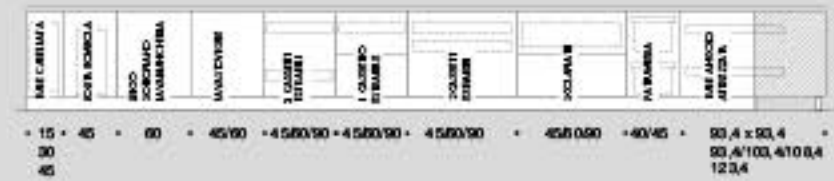
BASI
BASES
ELEMENTS BAS



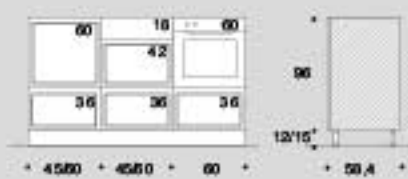
BASI A GIORNO
OPEN BASE
ELEMENTS BAS OUVERTS



BASI ATTREZZATE
EQUIPPED BASES
ELEMENTS BAS EQUIPES



BASI "MDI"
"MDI" BASES
ELEMENT BASE "MDI"



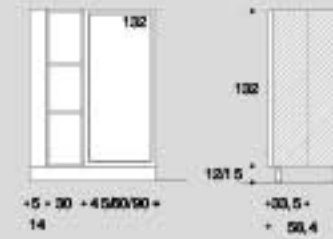
BASI
BASES
ELEMENTS BAS
H 72cm - P 33,5cm



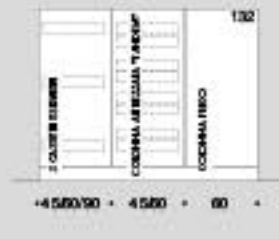
SOPRAPENSILE E SOPRACOLONNE
SUSPENDED WALL UNIT AND TALL UNITS
ELEMENTS SUR MEUBLES HAUTS ET SUR ARMOIRES



COLONNE
TALL UNITS
ARMOIRES
H 132cm - P 33,5/50,4cm



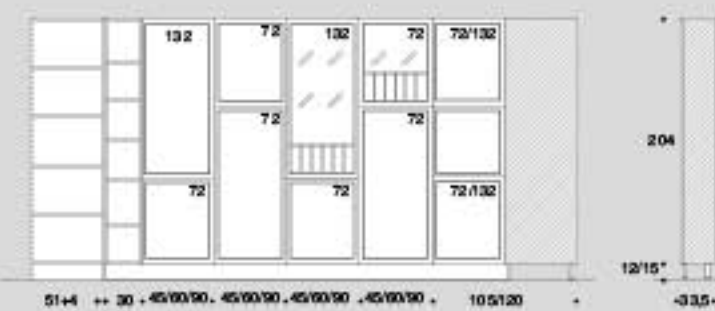
COLONNE ATTREZZATE
EQUIPPED TALL UNITS
ARMOIRES EQUIPES
H 132cm



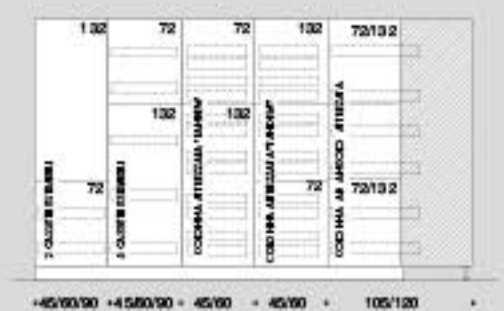
COLONNE FORNO
OVEN TALL UNITS
ARMOIRES POUR FOUR
H 132cm



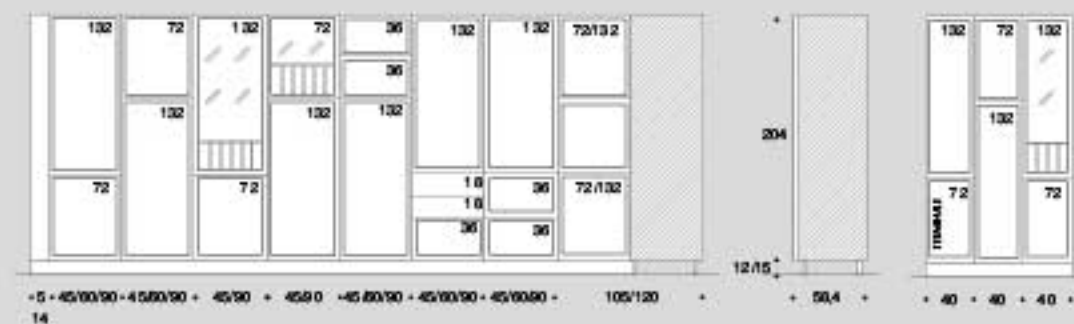
COLONNE
TALL UNITS
ARMOIRES
H 204cm - P 33,5cm



COLONNE ATTREZZATE
EQUIPPED TALL UNITS
ARMOIRES EQUIPES
H 204cm



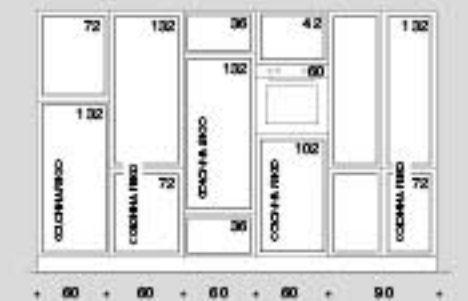
COLONNE
TALL UNITS
ARMOIRES
H 204cm



COLONNE FORNO
OVEN TALL UNITS
ARMOIRES POUR FOUR
H 204cm

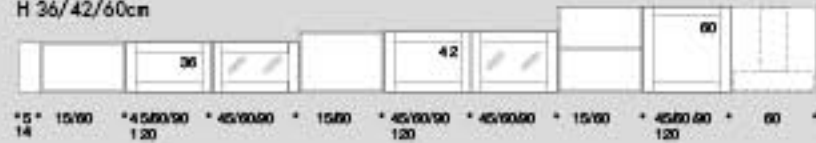


COLONNE FRIGO
REFRIGERATOR TALL UNITS
ARMOIRES POUR REFRIGERATEUR
H 204cm

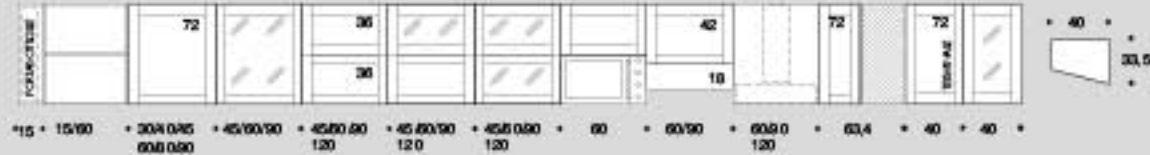


RIVA 68

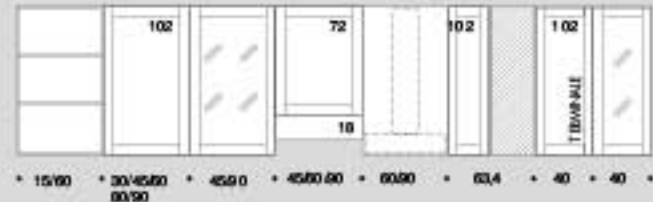
PENSIU
WALL UNITS
ELEMENT HAUTS
H 36/42/60cm



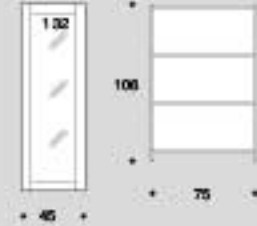
PENSIU
WALL UNITS
ELEMENT HAUTS
H 72cm



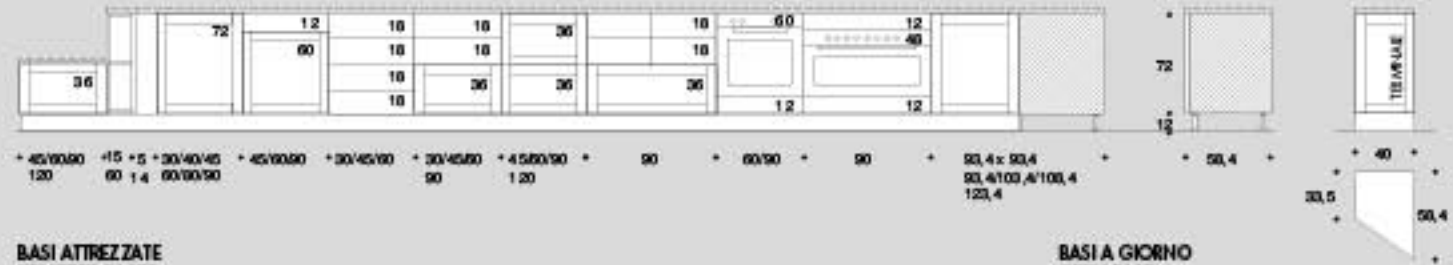
PENSIU
WALL UNITS
ELEMENT HAUTS
H 102cm



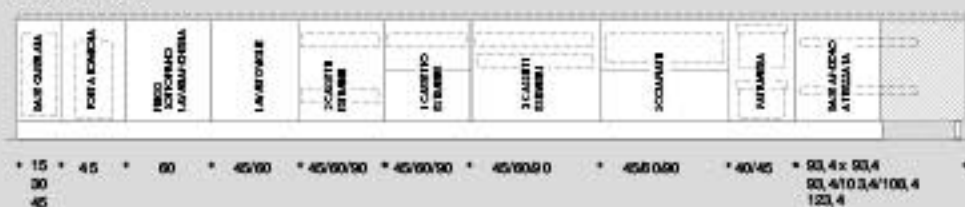
PENSIU
WALL UNITS
ELEMENT HAUTS



BASI
BASES
ELEMENT BAS



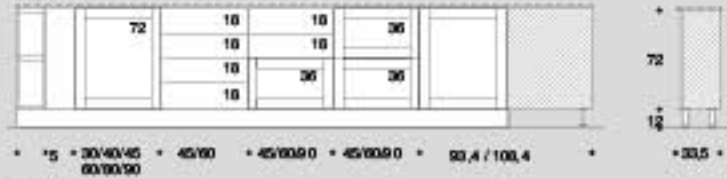
BASI ATTREZZATE
EQUIPPED BASES
BASES EQUIPES



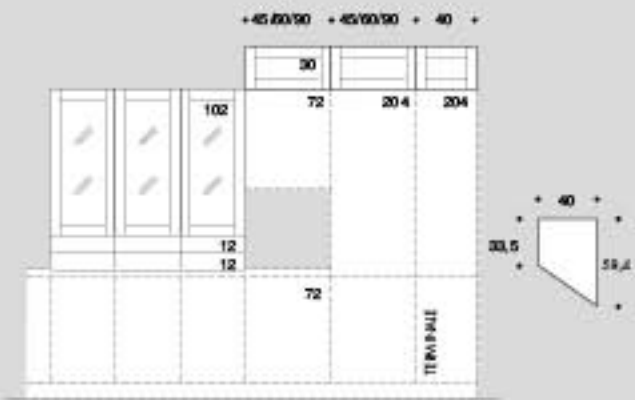
BASI A GIORNO
OPEN BASE
ELEMENTS BAS OUVERTS



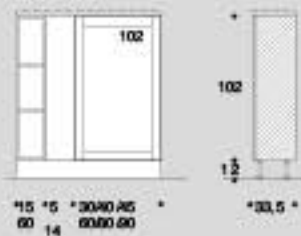
BASI
BASES
BASES EQUIPES
H 72cm



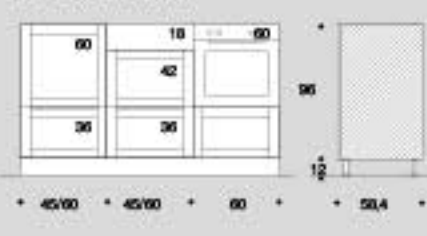
SOPRAPENSILE, SOPRACOLONNE E VETRINE DA APPOGGIO
SUSPENDED WALL UNIT AND TALL UNITS, COUNTERTOP GLASS CABINET
ELEMENTS SUR MEUBLES HAUTS, SUR ARMOIRES ET VITRINES EN APPLI



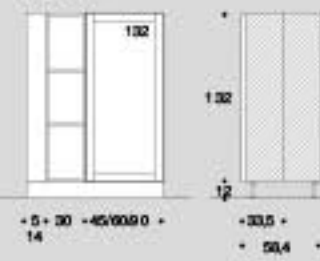
BASI
BASES
ELEMENT BAS
H 102cm



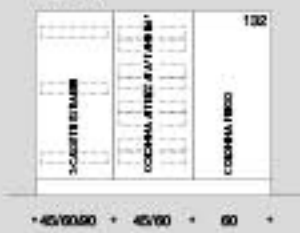
BASI "MIDI"
"MIDI" BASES
ELEMENT BAS "MIDI"



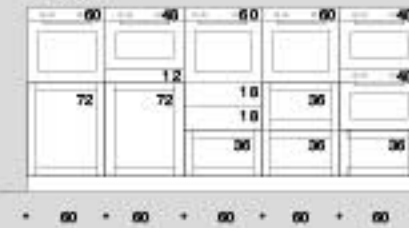
COLONNE
TALL UNITS
ARMOIRES
H 132cm



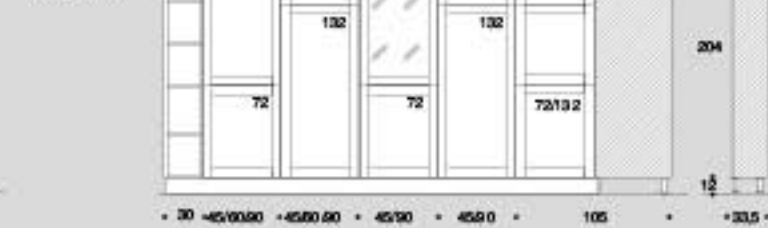
COLONNE ATTREZZATE
EQUIPPED TALL UNITS
ARMOIRES EQUIPES
H 132cm



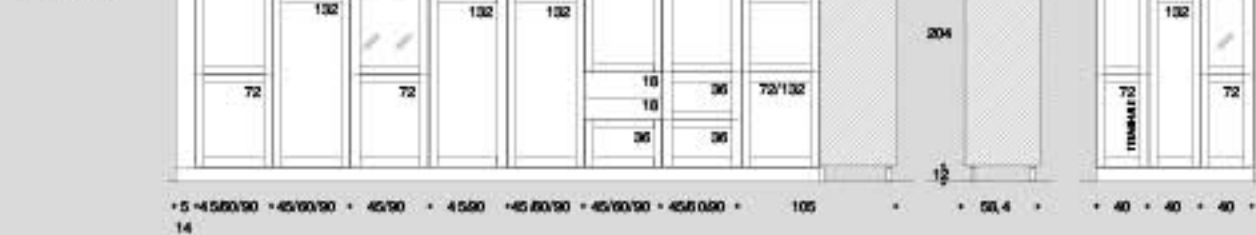
COLONNE FORNO
OVEN TALL UNITS
ARMOIRES POUR FOUR
H 132cm



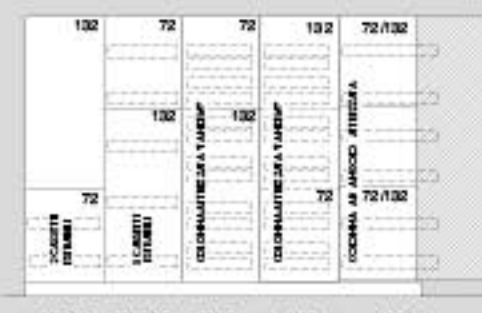
COLONNE
TALL UNITS
ARMOIRES
H 204cm



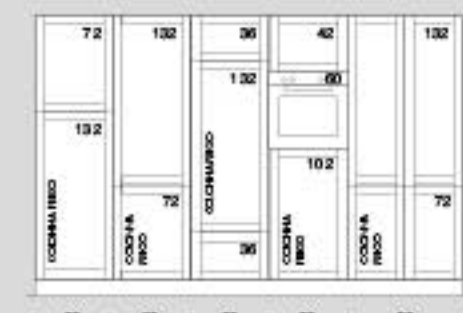
COLONNE
TALL UNITS
ARMOIRES
H 204cm



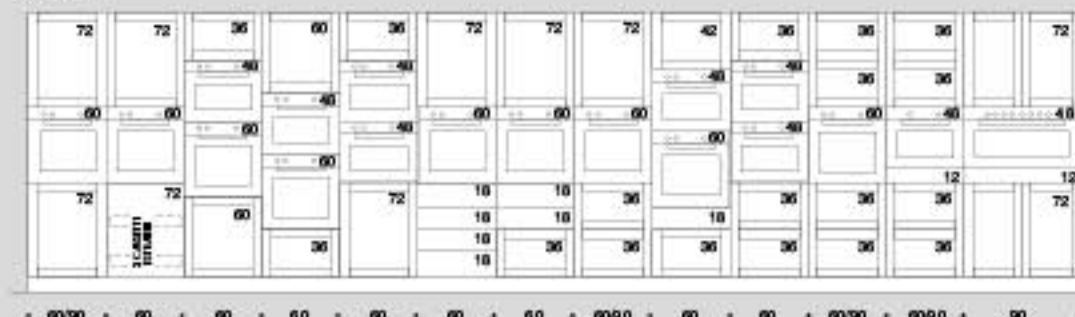
COLONNE ATTREZZATE
EQUIPPED TALL UNITS
ARMOIRES EQUIPES
H 204cm



COLONNE FRIGO
REFRIGERATOR TALL UNITS
ARMOIRES POUR REFRIGERATEUR
H 204cm



COLONNE FORNO
OVEN TALL UNITS
ARMOIRES POUR FOUR
H 204cm



FINISHES



LACCATO OPACO MANOPESCA / SILK-EFFECT MAT LACQUERED / LAQUÉ MAT EFFET SOIE



Bianco Neve



Bianco



Madreperla



Ottawa



Grigio Londra



Anta quadra
Quadra door
Façade mod. quadra



Anta quadra con vetrina
Quadra door with glass
Façade quadra vitrée



Anta in acciaio bugnato
Stainless door with raised decor
Façade en acier avec décors en relief

LACCATO OPACO MANOPESCA / SILK-EFFECT MAT LACQUERED / LAQUÉ MAT EFFET SOIE



Bianco Neve



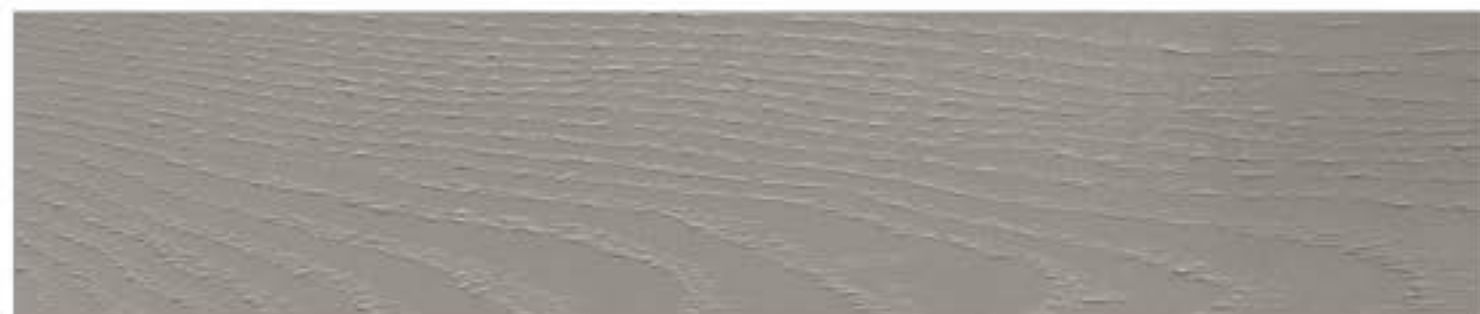
Bianco



Madreperla



Ottawa



Grigio Londra



Anta quadra
Quadra door
Façade mod. quadra



Anta quadra con vetrina
Quadra door with glass
Façade quadra vitrée



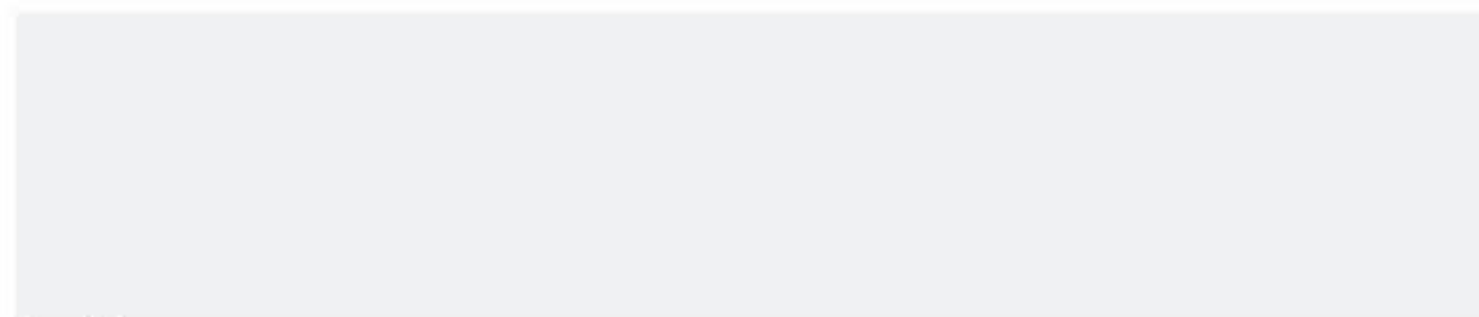
Anta quadra con lavagna
Quadra door with blackboard
Façade quadra avec tableau noir



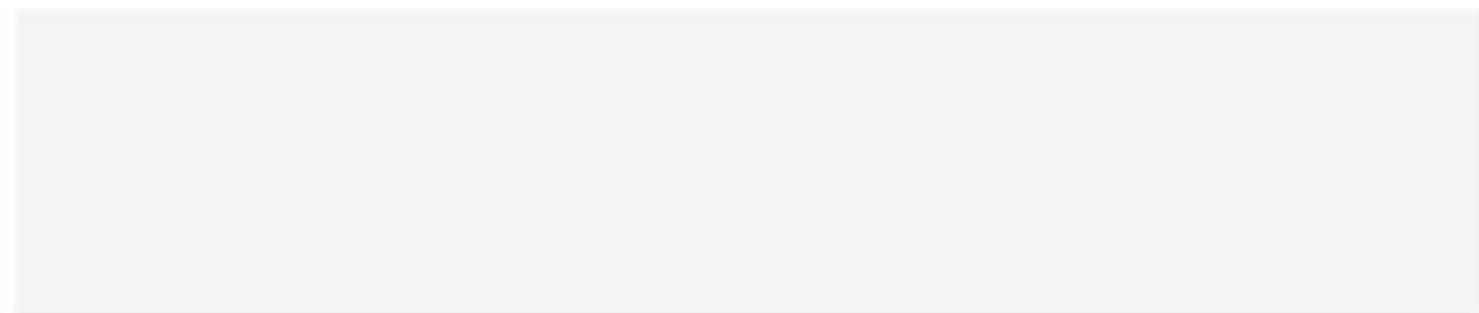
LEGNO / TYPES OF WOOD / BOIS

Frassino Naturale

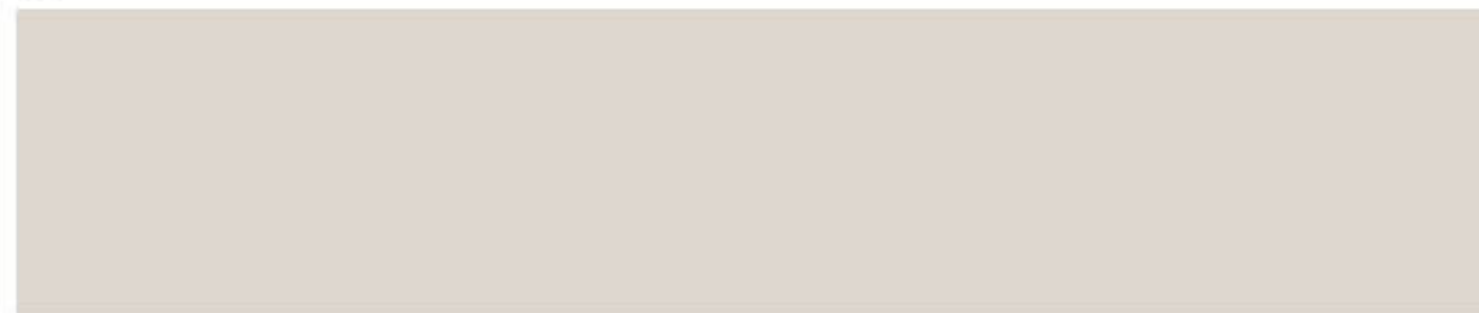
LACCATO OPACO MANOPESCA / SILK-EFFECT MAT LACQUERED / LAQUÉ MAT EFFET SOIE



Bianco Neve



Bianco



Madreperla



Ottawa



Grigio Londra



Anta quadra
Quadra door
Façade mod. quadra



Anta quadra con vetrina
Quadra door with glass
Façade quadra vitrée

LACCATO TALCATO / POWDERED LACQUERED / LAQUÉ FINITION POUVRE DE TALC



DCA - Canapa



DSL - Sals



DMU - Verde muschio



Anta quadra
Quadra door
Façade mod. quadra



Anta quadra con vetrina
Quadra door with glass
Façade quadra vitrée

DÉCAPÉ



DCA - Canapa



Anta quadra
Quadra door
Façade mod. quadra



Anta quadra con vetrina
Quadra door with glass
Façade quadra vitrée

SPAGNOLcucine

SEDE LEGALE:

MOBIL S.p.A.
Via Vidor, 1
31010 Masnigo di Moriago
(Treviso) ITALY

Tel. +39 0438 89 11
Fax +39 0438 89 00 82
E-mail mobili@spagnol.it

SEDE OPERATIVA:

SPAGNOL CUCINE
Via Paludotti, 2
31020 Vidor
(Treviso) ITALY

Tel. +39 0423 98 87
Fax +39 0423 98 88 19
E-mail cucine@spagnol.it
Web www.spagnolcucine.it

Export Department:
Fax +39 0423 988836
E-mail export@spagnol.it



© MOBIL S.p.A.
Edition September 2016



Render images: Kinetix
Colour Separation: Image
Graphic Design: Elisa De Marchi
Printed by: Grafiche Ariga

425-SCCATCLASS - 09-16 Rev.0

